



15th ANNUAL



FRINGE

FESTIVAL KC

JULY 14-28

KCFRINGE.ORG



Artists Empowered.

We are very proud to support the arts in Kansas City through the following Organizations:

**KC Creates
Fringe Festival KC
Fringe Presents
Inspire KC Corporate Art Challenge**



websites e-commerce search social

WELCOME TO FRINGE

15 years! KC Creates is proud to present the 15th annual Kansas City Fringe Festival. This year's Festival boasts 80 performing entries with a total of 400 performances and 38 Visual Artists in 14 venues.

Artists and audiences from all over gather to celebrate the arts and reconnect with old friends. Our amazing volunteers and volunteer staff work tirelessly all year long with dedication, determination, and passion to make this event happen in our community. When you see folks with "Staff" or "Volunteer" badges, please thank them for their dedication and determination.

We believe that artists deserve an accessible platform and a right to be paid for their contributions to our community. We will always remain inclusive of all voices. For the last Fifteen years there has been nothing else in town like the KC Fringe and I am proud to be a part of the Fringe Family. And you, are a part of it too!

If asked what one thing makes the Fringe special and essential, I would have to say – it's ability to empower people. Because Fringe is affordable for artists to participate in, it empowers them to produce their own work in their own way. It empowers them to take chances, which leads to exciting and innovative art. It empowers them to speak their truth without fear or censorship. And it empowers you, the audience, to see diverse and innovative entertainment and art at an affordable price.

Thank you for supporting the Fringe, and helping to empower independent performing arts in our community

Fringefully,
Cheryl Kimmi
Executive Producer



CONTENTS

- Staff 5
- Sponsors & Donors . . . 7
- What's the Fringe? . . . 9
- Venue Map 11
- Youth & Teen Fringe. . 13
- Visual Arts 15
- Show Schedule 31
- Best of Fringe. 43
- Show Info 44
- Artist & Show Index. . 75



KC FRINGE ANNOUNCES NEW PLAYWRITING PRIZE

In order to encourage playwrights to participate in the KC Fringe, KC Creates director Cheryl Kimmi announced a new playwrighting prize, to be sponsored by Theater League. The competition includes a \$1,500 prize for the best theatrical production presented at the 2019 Fringe Festival.

"We're excited to add this prize to our program," explained Kimmi. "When Theater League president Mark Edelman shared with me his organization's desire to see more plays – actual staged productions featuring two or more actors in a theatrical setting, not staged readings – I thought this would be a great new feature for us. Hopefully, it's something we can do every year."

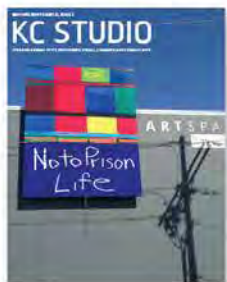
The juried contest will cover this year's qualifying Fringe productions, with the prize awarded at the conclusion of the Festival. "We thought we'd recognize Mark, who's been a supporter of the Fringe for many years," continued Kimmi. "So we're calling it the "Edelman Playwrighting Prize" in his honor.

The Arts Deserve Expert,
Timely Reviews.

KC STUDIO DELIVERS.



Visit kcstudio.org/reviews to find
monthly reviews of the best in
visual arts, theater, music and dance.



Visit kcstudio.org/subscribe to sign
up for a FREE 3-year subscription.

KC Studio's online reviews are made possible by: Visual Art Reviews - The Lighton Fund; Performing and Music Reviews - Leonard and Irene Bettinger Philanthropic Fund, Mike and Julie Kirk and the Muriel McBrien Kauffman Foundation

FRINGE STAFF

THE KANSAS CITY FRINGE FESTIVAL

PO Box 415001, Kansas City, MO 64141-5001
info@kcfringe.org, 816-359-9195

OPERATIONS STAFF

Cheryl Kimmi – Founder and Executive Producer

Jaime Aguirre – Grants Writer
Lynne Anderson – Late Nite & Happy Hour Coordinator
Diana Arganbright – Director of Operations
Stephanie Bonnett – Special Projects Associate
Dalene Bradford – Strategic Planning
Peggy Brockschmidt – Bookkeeper
Bryan Colley – Printed Program, Technology Chief
Anna DeSando – Branding Developer, Creative Guru
Barbara Dooley – Director of Special Projects
Ashley Dover – Technical Co-Director
Skip Gordon – Technical Co-Director
Nico Gray – Marketing Director
Sheri Hall – Youth Fringe Coordinator
Brent Kimmi – Operations Advisor
Phil Kimmi – Historian
Erik LaLonde – Graphic Design
Trenna Reed – Program Manager
Sara Slaughter – Visual Arts Coordinator
Sandy Woodson – Library Liaison and Teen Fringe Coordinator

Visual Arts Team – Katheryn Krouse, Lisa Coyan, Spenser
Albertsen, Susana Bruhn

Volunteer Team – Doug Adair, Stephanie Davis, April
Hendrickson, Richie Johnson, Joshua Judy, Jen Kiper,
Coyote Schaaf, Jesse Schaaf, Ken Stewart, Trisha Van Wig,
Meghan Young

Interns – Ashley Helm, Natalie Leslie, Brendan Stevens, Grace
Wampler

SPECIAL THANKS

Union Station—George Guastello, Jerry Baber, Nale Uhl, Charlie Frank and Wes; The Creativity Connection: Ron Zoglin and Deborah Shouse; Henderson Engineering; Johnson County Public Library; Kansas City Public Library; KKF1 90.1 FM Community Radio; Mark Edelman and Theatre League; Mike Burke of Burke Payne, LLC; The Missouri Arts Council; Muriel McBrien Kauffman Foundation; The Neighborhood Tourist Development Fund; Schlafly Beer; Service Printing and Graphics; Lance Loewenstein Attorney at Law PC; Mia Porterfield & Doug Higson with VMA; Adair Exchange Bank Foundation

BOARD OF DIRECTORS

Diana Arganbright
Mark Conarroe
Katherine Holland Fox
Trudy Homan
Robert McIntyre

**KANSAS CITY
ACTORS THEATRE**

Great actors. Smart plays.

SEASON 15

2019 - 2020

Join us for the remaining 3 shows of our 15th season



**A DOLL'S
HOUSE**
by Henrik Ibsen

AUG 7 - 25, 2019
City Stage, Union Station

Featuring
Hillary Clemens
Todd Lanker
Christina Schafer
Tyler Alan Rowe
Brian Paulette
and **Carla Noack**

Another great season
of smart plays with
great actors!

You'll want to see all
three, so why not save



"Master Harold"
...and the Boys
by Athol Fugard

SEP 11 - 29, 2019
City Stage, Union Station

Featuring
Walter Coppage
(KCAT co-founder)
Arthur Clifford
and **Khalif J. Gillett**



'night, Mother
by Marsha Norman

JAN 8 - 26, 2020
City Stage, Union Station

Featuring
Jan Rogge and
Cinnamon Schultz

SAVE WITH A

3-SHOW SUBSCRIPTION

WWW.KCACTORS.ORG Visit online or call for tickets **816-235-6222**

SPONSORS & DONORS



SPONSORS & DONORS

FRIENDS OF FRINGE



\$25,000+ PRESENTING SPONSOR

Mark Edelman—Theatre League

\$10,000+ LEAD SPONSOR

Missouri Arts Council
Muriel McBrien Kauffman Foundation
Neighborhood Tourist & Development Fund

\$5,000+ DONOR

The Arts KC Fund

\$3,000+ DONOR

Henderson Engineering— Visual Arts
Sponsor

\$2,000+ DONOR

Adair Exchange Bank Foundation
Mark and Doni Conarroe
Lance and Heather Loewenstein

\$1,000+ DONOR

Doug Adair and Joshua Judy
Dunn Family Foundation
Richie Johnson



\$500+ FRINGE FANATIC

Samuel Bennett
Dalene Bradford
Trudie Homan

\$250+ FRINGE FAVORITES

Barbara Dooley
Phil Hampton
Lighton Fund
Phil Meiers
Clarence Simmons

\$100+ FRINGE FAITHFUL

Peggy Brockschmidt
Erik Hoar

\$50+ FRINGE FOLLOWER

Matthew Hughes
Jen Kiper
Molly Sefton
Kathryn Webster

The Kansas City Fringe Festival is primarily a volunteer organization including seasonal festival staff, board, and festival volunteers. KC Fringe is a 501(c)(3) not-for-profit organization chartered in the State of Missouri.

JOIN FRIENDS OF FRINGE TODAY

Friends of Fringe donations of \$50 and above will receive a tax deductible letter less than the value of the gift. To donate or sponsor visit kcfringe.org or email sponsorship@kcfringe.org

\$500+

FRINGE FANATIC

- Tax deductible \$380
- Listed in Program
- Listed on website
- Notification of all Fringe events
- Discounted admission to select events
- Two Festival T-Shirts
- Punch card
- Two Buttons
- 15% Off Merchandise Sales at 411

\$250+

FRINGE FAVORITES

- Tax deductible \$190
- Listed in Program
- Listed on website
- Notification of all Fringe events
- Discounted admission to select events
- Two Festival T-Shirts
- 4 tickets
- 15% Off Merchandise Sales at 411

\$100+

FRINGE FAITHFUL

- Tax deductible \$70
- Listed in Program
- Listed on website
- Notification of all Fringe events
- Discounted admission to select events
- One Festival T-Shirt
- 2 tickets
- 15% Off Merchandise Sales at 411

\$50+

FRINGE FOLLOWER

- Tax deductible \$40
- Listed in Program
- Listed on website
- Notification of all Fringe events
- One Festival T-Shirt
- 15% Off Merchandise Sales at 411

\$25+

FRINGE FANS

- Listed in Program
- Listed on website
- Notification of all Fringe events
- 15% Off Merchandise Sales at 411

BUTTON PERKS

These Fringe-friendly businesses offer discounts if you show them your Fringe Button. Get an up-to-date listing of all Button Perk merchants and their offers at kcfringe.org/button-perks.

PERKS ALL YEAR ROUND



Actalyst

20% off the Launch Now Workshop • vidadancecompany.com/Movements.html

blue bird bistro

Blue Bird Bistro

10% off entree • 1700 Summit St



Bunker

10% off all regular price items • 4056 Broadway



Just Off Broadway

One Free Concession Item after festival is over (July 29th, 2019-June 2020) • 3051 Penn Valley Dr



Prospero's Books

25% off year-round PLUS an EXTRA 15% off during the festival! • 1800 W 39th St



Phoenix and Herb

20% off purchase • 3957 Main St



VidaDance Studio

10% off your first multi-week class • 2321 W 143rd St



Westport Coffeehouse

10% off lunch sandwiches and wraps • 4010 Pennsylvania

PERKS DURING THE FESTIVAL (JULY 14-28, 2019)



Artist and Craftsman Supply KC

20% discount • 229 Southwest Blvd



Bizz and Weezy Confections

10% off anything in-store, excluding merchandise • 1800 Baltimore



Parisi Cafe

Cold Brew: buy one get one free! • 30 W Pershing Rd in Union Station



PT's Coffee

15% off purchase at both locations • 310 Southwest Blvd • 1310 Baltimore



Westport Ice Cream Bakery

10% off purchase • 4120 Pennsylvania Suite 14



SHOW YOUR BUTTON AND SAVE
kcfringe.org/button-perks

m d c
midwest dramatists center
midwestdramatists.org

Don't miss the Midwest Dramatists Center resident playwrights at Fringe!

Bang by Dan Born

Enlarged to Show Texture
by Bryan Colley and Tara Varney

The Kitchen Plays and Accidental Points of View by Lezlie Revell Zucker

WTF?

WHAT'S THE FRINGE?

The Fringe Festival is one of Kansas City's largest Performing Arts Festivals – 11 days packed to the brim with performing and visual arts. KC Fringe takes place in 14 venues from Downtown to the Plaza with multiple events at each venue every night. Whatever your fancy, KC Fringe has something for you!

HOW TO FRINGE

STEP 1: GET THE SCHEDULE

The printed schedule is available at all Fringe venues during the festival, online at kcfringe.org, or on our KC Fringe Mobile App.

STEP 2: BUY A BUTTON

The Fringe Button provides access to every event at Fringe. With your \$5 Fringe Button, you can purchase tickets to any Fringe show and gain entrance to free events like Late Night on the Fringe. You can also use your buttons for special perks at local area businesses (see ad opposite page). Children 12 and under get their Fringe Button free. Buttons are available at every Fringe venue during the festival and at Fringe 411 in the Grand Hall of Union Station (see hours below).

STEP 3: GET A TICKET

Ticket prices are \$10 for each event and can be purchased at the venues 30 minutes prior to showtime, in advance on kcfringe.org, or at Fringe 411 in Union Station. Tickets for children ages 6-12 are \$5 and only available at the box offices and 411 (check content rating for family friendly shows). Fringe 411 also sells shareable Punch Passes worth \$100 for only \$90. We accept Visa, MasterCard, American Express and cash. No personal checks please.

STEP 4: GET YOUR FRINGE ON!

Questions? Call 816-359-9195.

FRINGE 411

Fringe 411, located in the Grand Hall of Union Station (next to Fringe Visual Arts), is the place for tickets, programs, show information, or any general questions about the festival. Find all your Fringe merchandise and festival gear here. Pop in or call 816-359-9195. Parking in the West Yards Garage is free for the first 30 minutes.

FRINGE 411 HOURS:

July 14-18	Noon-6:00pm
July 19-20	Noon-8:00pm
July 21	Noon-6:00pm
July 22-27	Noon-8:00pm
July 28	Closed

RUNNING TIMES AND RATINGS

All Fringe shows are 60 minutes. There is one half-hour between shows at most venues, and start times vary by venue. Doors open 20 minutes before showtime. No refunds after the show begins, and no late seating. Shows are rated G, PG or R – kinda like the movies.

FRINGE FOR FREE

Volunteers are the cornerstone of Fringe, and it's a great way to earn KC Creates Cash and go to Fringe for free. Volunteers assist with box office sales, ushers, act as house managers, and so much more. Get the whole scoop on how to volunteer at kcfringe.org/volunteer.

FRINGE REVIEWS

So many shows, so little time! If you're debating on which shows to attend, consider our reviews posted at kcfringe.org. We also invite Fringe attendees to post comments online about shows and share their experiences with the KC Fringe community!

FRINGE TEASERS

7 PM JULY 16 & 17: UNION STATION EXTREME SCREEN

The best way to dive into Fringe is to attend the opening night teasers. This year, there will be two nights where the public will have an opportunity to sample two minute teasers of many festival performances and offerings. We roll out the Fringe carpet at 6:00pm for the Fringe Walk, and teasers begin at 7:00pm. The first night will feature Fringe shows for all ages (G and some PG), while the second night of teasers will feature the rest of the PG shows and those specifically geared toward mature audiences (R). This event will be at Union Stations' Extreme Screen and is free to the public. Public parking is available in the West Yards' parking garage located on the west side of Union Station.

KICK-OFF PARTY

6 PM JULY 18: HAVERTY FAMILY YARDS

Magic! Tears! Laughs! – It's Fringe! Join us for our 15th annual Kick Off Party at the Haverty Family Yards behind Union Station on July 18th at 6PM. Meet fellow attendees, artists, crew, and volunteers as we celebrate the official opening night of the Fringe Festival. We will have important announcements and highlights about the Fringe experience. Plus, it's a great opportunity to coordinate your show schedule with your friends and family. Food and drink will be provided. Faces new and old are welcome! See you there!

LATE NITE ON THE FRINGE

10 PM-1 AM JULY 19, 20, 26, 27: HAVERTY FAMILY YARDS

Fringe likes to stay up late. Join us after hours at The Haverty Family Yards behind Union Station. Hang out with the artists, crew, and volunteers as you enjoy local bands and Schlafly brews. Late Nite on the Fringe admission is free with your Fringe Button.

BEST OF FRINGE

SUNDAY, JULY 28

Want to see the most popular shows at Fringe? The event with the best average attendance at each venue will receive a bonus performance at that venue on Sunday, July 28. The Best of Fringe schedule will be announced at midnight Saturday, July 27 at Late Nite and on our website at kcfringe.org.

CLOSING NIGHT PARTY

6-9 PM JULY 28: HAVERTY FAMILY YARDS

Celebrate the end of another great Fringe at our closing night party starting at 6:00pm on Sunday, July 28. It's a great place to say goodbye to all the artists and thank our volunteers for all their hard work during Fringe. Join us for the exciting announcement of the top shows of the 2019 KC Fringe while enjoying light food and drink. Remember to bring a blanket or lawn chair.



**Your
Hometown
Bank**

913.367.6000

myexchangebank.com

Member FDIC

FRINGE VENUES



- | | | |
|---|---|--|
| <p>A ARTS ASYLUM
FRINGE WITH BENEFITS GALLERY
1000 East 9th Street</p> <p>B THE BLACK BOX
1060 Union Avenue</p> <p>C BUFFALO ROOM
Behind Westport Flea Market
817 Westport Road</p> <p>D CENTER FOR SPIRITUAL LIVING
1014 W 39th Street</p> <p>E CROWN CENTER
THE COTERIE THEATRE
2450 Grand Boulevard</p> | <p>F JUST OFF BROADWAY
3051 Penn Valley Drive</p> <p>G KANSAS CITY BALLET
BOLENDER CENTER
500 West Pershing Road</p> <p>H THE LORETTO
AUDITORIUM
CHAPEL
COMMONS
1111 W 39th Street</p> <p>I METROPOLITAN ENSEMBLE
3927 Main Street</p> <p>J PLAZA LIBRARY
4801 Main Street</p> | <p>K UNICORN THEATRE
JEROME STAGE
LEVIN STAGE
3828 Main Street</p> <p>L UNION STATION
CITY STAGE
EXTREME SCREEN
FRINGE 411
GRAND HALL GALLERY
HAVERTY FAMILY YARDS BEER TENT
30 West Pershing Road</p> <p>M WESTPORT COFFEE HOUSE
4010 Pennsylvania</p> |
|---|---|--|

ANCIENT MYSTERIES • MODERN DISCOVERIES

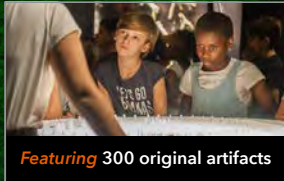


North American Premiere

STONEHENGE



Journey Back 12,000 Years



Featuring 300 original artifacts



Hands-On Activities

Tickets as low
as \$12.95*

*Excludes Preservation Fee

Limited Engagement only at UNION STATION



YOUTH AND TEEN FRINGE

OPEN MIC NIGHT AT THE PLAZA LIBRARY

5-9 PM SATURDAY, JULY 20: KANSAS CITY PUBLIC LIBRARY PLAZA BRANCH, 4801 MAIN ST – FREE

This FREE event will begin at 5:00pm with FREE food and drink. From 5:30pm-7:30pm there will be free workshops offering upcycling fashion, improv, and more. At 7:00pm, a live band will perform while everyone gathers in the auditorium to watch and/or participate in the Open Mic night. If you have an act you would like to perform just sign up by 6:30pm and we'll put you on the list! And did I mention this is TOTALLY FREE?



COTERIE PLAYWRITING WORKSHOP

10 AM - 3:30 PM SATURDAY JULY 27: THE COTERIE THEATRE, LOWER LEVEL OF CROWN CENTER

To give a voice to emerging young writers, The Coterie Theatre is offering a teen playwriting seminar, Saturday July 27, in the 2019 KC Fringe Festival, based on Coterie Artistic Director Jeff Church's acclaimed program that he originated at the Kennedy Center in Washington, D.C.

Students will learn to create settings, devise scenarios, and build characters. Upon completion of this seminar with a Coterie professional playwright/facilitator, young playwrights will have devised a beginning scenario for a complete play and will have several fully written scenes. Following this seminar, participants may be selected to develop their plays at The Coterie's Young Playwrights' Roundtable.

The workshop is 5 1/2 hours long. It will start at 10:00am and end at 3:30pm, Saturday July 27. The workshop will be held at The Coterie in Crown Center, 2450 Grand Blvd, KCMO 64108. Available only for those entering grades 7-12. Students should plan to bring lunch or money for lunch. The workshop will be led by professional playwright, actress, and teaching artist Emma Carter.

YOUTH FRINGE

SATURDAY & SUNDAY FREE ART WORKSHOPS

1-4 PM JULY 20; 2-4 PM JULY 21: KANSAS CITY PUBLIC LIBRARY PLAZA BRANCH, 4801 MAIN ST – FREE

Interested in having fun? Join us in the Art Spot and in the middle of the Children's Area where artists like Aaron Sutton will be hosting a clay baking and painting party (yup paint). Stonelion Puppets will be crafting finger puppets, and much more. There will be more fun than you can imagine! Bring your parents they get to play too. Come and go as you please. YOUth Fringe is set to bring you the best interactive fun you've had all year! Find out more about KC Fringe YOUth Festival, in collaboration with the KC Plaza Library, at www.kcfringe.org/youth-fringe

MINDFUL REFLECTION

An Outdoor Mind, Body and Spirit Festival

JULY 27

yoga & meditation, breakfast, music,
snacks, socializing, workshops and more!
All under Reflecting Motion sky sculpture.

Presented by



In Collaboration with QUIXOTIC

Tickets at ReflectingMotion.com



JOHNSON COUNTY
COMMUNITY COLLEGE
CARLSEN CENTER

NON-IGNORANT
SASSY
Z
WON

OCT. 12



A Night with Janis Joplin
Celebrating the legend
50 years later

FEB. 14, 15, 16



Mrs. Krishnan's Party
An interactive celebration
for all ages

APR. 3



Piff the Magic Dragon
Magic on fire

For more information and to purchase tickets, please visit jcc.edu/CarlsenCenter



ENDLESS VARIETY, MATCHLESS TALENT!
Build a season package of **5 SHOWS** (or more) and save **10%**

jcc.edu/CarlsenCenter | 913-469-4445
FREE PARKING | WINE & BEER AVAILABLE | NO ONLINE FEES

VISUAL ARTS

VISUAL ARTS

OPENING RECEPTION: 2:00-5:00PM SUNDAY, JULY 14

EXHIBIT: JULY 14-27

Union Station Grand Hall

The Kansas City Fringe Festival is once again proud to bring you our unjuried, uncensored visual arts show at Union Station! At this show you will experience visual art in all its forms from painting, to photography to sculpture and more. There will be something for everyone at this feast for the eyes. Come to our opening gala at Union Station to meet the artists and enjoy local food and entertainment.

FRINGE WITH BENEFITS

EXHIBIT: JULY 14-AUGUST 4

The Arts Asylum, 1000 E 9th St.

The Fringe Festival has been an extravaganza of avant-garde art in Kansas City for over a decade. For this 15th year on the Fringe, we are proud to display "mature" art at our Fringe With Benefits display. Leave the kids at home, because this art is for adult eyes only. No subject is taboo with the Fringe Festival, so come out and enjoy the riskier side of art. Fringe with Benefits will run at the Arts Asylum. Make sure you take in a show while you're there!



IRON ARTIST

2:30-5:00PM SUNDAY, JULY 21

Union Station Post Office Hallway

Iron Artist: Several contestants, a box of art supplies, and a mystery ingredient. What will they create? Who decides the winner? You do of course! Whoever has the most votes at the end of an hour wins our fabulous prize and prestige as the 2019 Iron Artist! Tom Kessler and crew host this exciting event in the Union Station Grand Hall next to our exciting Visual Art Show.

FRINGEPRIZE

The Kansas City Fringe Festival is excited to bring back the FringePrize Invitational for its sixth year! An absolutely free public contest, FringePrize pits our visual artists against each other in an exciting artistic extravaganza. Only one can emerge victorious. The victory of your favorite Fringe visual artist depends on you! Voting will begin July 14 and runs through July 27. The public is invited to come vote for their favorite or favorites among the entries, and the artist with the most votes wins our fabulous FringePrize! Come let your voice be heard. What is your personal definition of art? What captures your interest (and vote)? It promises to be a competition full of surprises, and we hope to hear your vote there!

FRINGE 411

During your Fringe travels this year make sure not to miss our Fringe 411 at the Union Station Grand Hall next to our exciting visual arts display. There's a little bit of something for everyone! At the Fringe 411 you can purchase buttons, tickets, Fringe merchandise, original art, and witness artists create masterpieces in front of your eyes. Fringe 411 is open at the following times:

FRINGE 411 HOURS

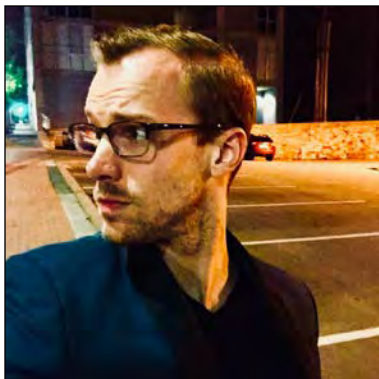
July 14-18	Noon-6:00pm
July 19-20	Noon-8:00pm
July 21	Noon-6:00pm
July 22-27	Noon-8:00pm
July 28	Closed

Gloria Boehm, RN, BSN
glokcmo816@gmail.com
816.585.3012

popUP pilates
& mindful personal training

Love Your Body Now
Empowering girls and women of all ages for 20+ years
Facebook @PilatesfortheNorthland
Proud supporter of KC Fringe 2019 and creator of *Weirdo: a perfectly normal lesbian contemporary ballet...*
Romance included

VISUAL ARTS



SPENSER ALBERTSEN

Tree Trunk

A showing of contemporary oil on canvas meant to bring a new dimension to the artist's work. Bringing portraiture to know light, dimension, composition and substance.



RODRIGO ALVAREZ

"Nature prevails"

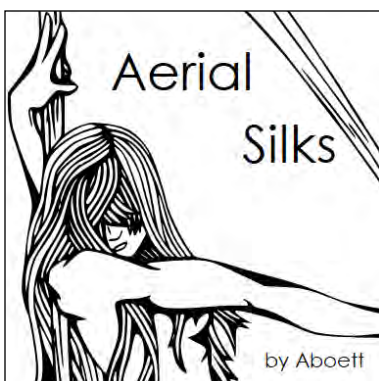
This exhibition will consist of the relentless nature of nature itself as Rodrigo shows how organic organisms prevail against our negative impact in the world we live in.



DANIEL BAXLEY

Meditations, Dreams, & Inner Space

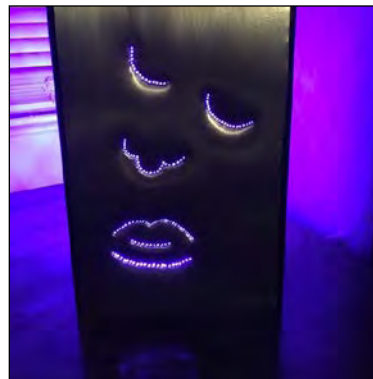
During the Summer of 2018 Daniel began to practice doing a series of small 9x12 pastel paintings early in the morning. After pouring his morning coffee he went directly to his studio and began to work on the pastels. He allowed himself to enter into a meditative state and opened up to accessing any images or awareness to come through from his Dreamtime and his inner awareness, totally being guided by whatever information flowed through while in a meditative state. The result was 49 pastels. He has been using the pastel sketches as guides and is reinterpreting his experience in oils.



ASHLEY BOETTCHER

Surrounded by noise and distraction there are still a few things that help us focus and relax. Several years ago, Ashley began taking aerial silks lessons for the exercise and continued for the inspiration it gave her. There is a profound beauty and grace in strength, an elegance in the human form. She has attempted to share the inspiring beauty that this activity represents for her with these ten images of aerial silks poses. Originally drawn in ink, they have been scanned and transformed to produce digital blueprints that were fed into a 3D printer and applied to card stock in nylon plastic. Finishing was done by baking the printed piece to temper the nylon and provide the desired smooth texture in the foreground of these mixed media pieces.

VISUAL ARTS



CAROL BRANSON

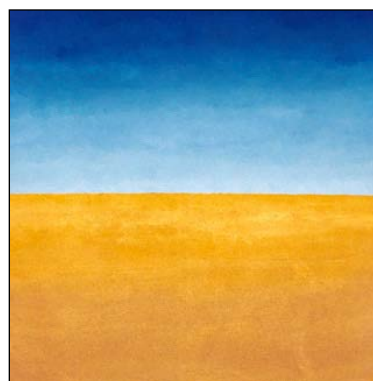
Lighted Expressions

I make many of my pieces from found objects or leftover material. Carol was a handy person for 20 years. She is also a lighting designer, so she likes to light her pieces too. Some are lighted with battery powered lights, some with electricity. Many combine metal and wood. Some pieces are whimsical, some are powerful. It also depends on what the individual "sees" in them. She loves hearing the different comments as people connect with a piece. All her pieces are on her website and she welcomes you to come see any that she hasn't sold yet in person. She can set up a showing in her home.



NICOLE BRINKMAN

Nicole is a KC native. She earned her BFA from Kansas City Art Institute. Her artistic focus is to paint people in their everyday life settings. Patterned paper is a favorite element for Nicole to use in order to create dimensions in her mixed media pieces. Nicole's primary medium is gouache/watercolor or acrylic on wood. Her website is nicolebrinkman.com



SUSANA BRUHN

Landscapes Paintings/Photos

A touch of color fields, regionalism, pop, metallic, rapid brushstrokes, simplicity, and mixing colors on the canvas composed what Susana calls "Colorized Landscapes."



ROGER CISSNER

Visions of Tranquility

Roger is primarily a photographer of opportunity, in that he tries to capture the essence of the places that he visits with an emphasis on capturing the moment rather than waiting for the "perfect" moment. He focuses primarily on the natural lighting and ambiance of sites to better interpret the images that he experiences in a manner that allows others to share in the beauty.

VISUAL ARTS



ELLEN CREED

Expressions of Color Theory

Acrylic on canvas, fringed textile. Rigid, tedious, and stay-inside-the-lines worksheets full of geometric patterns are the basis of any color theory class. Determined to not let her creativity and the large quantities of paint needed to mix colors go to waste, Ellen decided to listen to the colors and make real art from frustrating schoolwork.



CARL D'AMICO

Photography Art

Photo-digital art is the manipulation of images, textures and paintings to create art. Carl has been a photographer and a painter for the past 40 years and has collected images, textures and painted backgrounds that he now uses to create scenic, abstract and enhanced pictures that are better richer and fuller than what he used to do with Photography alone.



DETAILS JEWELRY: LISA COYAN & BARBARA SCHILLING

As an architect and an engineer, Lisa and Barbara bring creative details into their art. They use wire to wrap and weave gemstones to highlight the stone. They weave wire to create intricate pendants. They use metal etching, enameling, and resin to create original works of art. Their award-winning creations include unique designs based on life's journeys and often have a sense of whimsy. The jewelry pieces are diverse and appeal to a variety of customers.



DEVIN EDWARDS

Fluffy Nostalgia Pop Art

Devin's art is a mix of bright contemporary colors and nostalgic cartoons that create a vibrant blast of childhood warmth. He gives more of an up-to-date look on pop art as a style, and showcases its true versatility. "The Crusader" is a kid who is dresses up like Batman and goes out to save his community. Moral of his story: you don't need money to go out and make a change in this world, you just need the mindset or the "umph!" to get you out, and into action! Instead of making a comic book, Devin uses the character as a tool to express shapes in his painting, while also sneaking in a little storyline, too.

VISUAL ARTS



SARA ENGMAN-SLAUGHTER

Art in Miniature

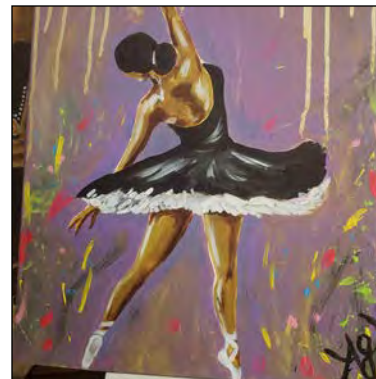
Art is about adventure, discipline, and trying new things that may scare you to express the creativity inside that is dying to come out. For the last year and a half Sara has been completing one small painting a day, covering a wide range of subjects from whales under the sea, to the human figure, to towering mountain landscapes. Some of the subjects intimidate her, while others spark her curiosity, or her nostalgia. A number of these "mini paintings" will be on display at this year's Fringe Festival. saraslaughter.myportfolio.com



LETOYA GOFF

Verity & Company

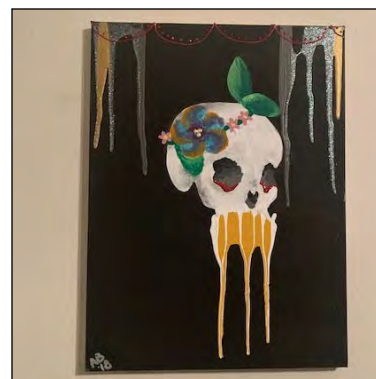
Handmade jewelry, a little something for everyone. Silver, semi-precious stones, leather, cotton, gold, imported recycled materials, glass, wool, crystal, and wood.



ANNA GOODWIN

"I was created to create."

Medium: Acrylic, gold leaf, glitter on canvas. Anna's art is colorful and vibrant. She likes to paint ballerinas and dancers and capture their movement. She paints women and embraces their curvaceous beauty. She also creates fun pieces that kids can enjoy, bringing their favorite characters to life on canvas. She has a distinct abstract and contemporary style that allows the viewer to identify with the piece and fall in love with their own beauty and confidence through her art. Her work is meant to enjoy no matter the subject or medium, as she shares her gift with others.



ALANA GWINNER

Out of the Fog

Painting is Alana's self care. When her mind gets cloudy and she can't focus, painting takes her "out of the fog."

dental **dc**
care **50**
A dental plan for
people over 50

Save money
Save your teeth



GREATER KANSAS CITY

Dental Care 50 was founded in 1987. Specialty marketed to retirees, our plan was the affordable alternative to costly individual dental insurance plans included in medicare part b insurance. Today, as more and more people are self employed or finding their dental plans dropped from company control, our plan is available to anyone over 50 years old.

We are not insurance. There are no claim forms to complete, no pre-authorizations, no waiting periods and no dollar limits. Members are issued a membership card immediately upon enrollment and instantly benefit from the special low rates for dental care at the Dental Care 50 dentist of their choice.

We are a family business. Created by Frank Schloegel III, the company's day to day operations are run by his wife Michele and his son, Frank IV. Glad to call Kansas City home, we strive to deliver personal service and customer support that will leave you smiling. Even if our plan is not right for you, we promise to help you find the care you need at the best price possible.

For More Information Contact :

816-523-3665

676-342-7344

frankschloegel@gmail.com

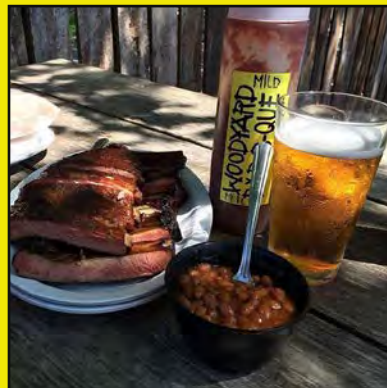


NO limits on care
NO prior authorizations
Coverage effective **immediately**
www.dentalcare50.com

**WOODYARD
BAR-B-QUE**

**Woodyard, the best
Kansas City BBQ
around!**

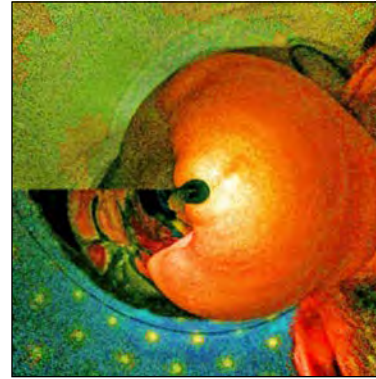
**Featuring live music
every Friday and
Saturday**



MON-THU 10:30-8 | FRI-SAT 10:30-9 | SUN 11:00-3:30
Restaurant: 913-362-8000 | Catering: 913-298-9515
3001 Merriam Lane Kansas City, KS 66106
woodyardbbq.com

VISUAL ARTS

LESLIE NORMAN HUBBLE



Leslie's pieces are based on the struggle to be human and reconcile what is on the inside with what is on the outside. She uses acrylic, pen, pencil, paper, collage, xrays, sonograms, MRIs, graphs and various detritus, and digital art. She is obsessed with beauty based on the distressing and try to let art interpret overload and disorder, emphasizing color, texture, and information.

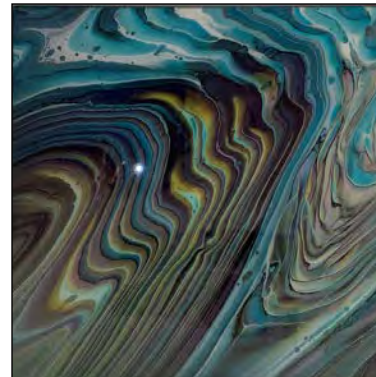
BRIAN JOHNSON

Rumination of Thunder



At the age seven, in a concrete structure narrowly missed by a tornado, Brian decided I wasn't afraid of storms anymore. Since then, he's become a storm photojournalist documenting nature's anger. He produces panoramic storms-capes in print and frame as well as metal plating.

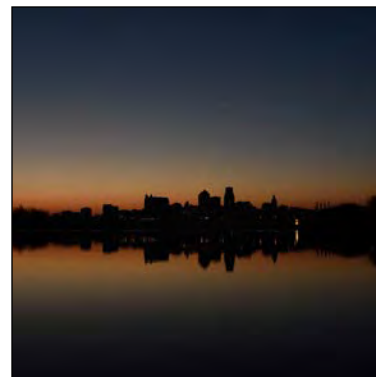
TONI KIRK



As a self-taught artist, Toni began pour painting after many years working as a registered nurse specializing in oncology and hospice care. With no artist training she learned that it is a wonderful therapeutic outlet. She also teaches this art and has consistently sold out classes. Her desire is to help others feel accomplished and proud of their creations.

ERIC KLAMM

Eric Klamm Photography



Eric's photographic goal is to instill an appreciation for our native lands by showing the simple beauty, daily charm, and epic moments they have to offer through photography. If he could inspire one person to the concept of "life is sweet", his photography would be a success.

Life Of An Empath

Told through Interpretive Dance

Written & Performed by
Joseph Shepard



THE BOLENDER

JULY 20, SATURDAY 9:30PM - 10:30PM
JULY 21ST, SUNDAY 5:00PM - 6:00PM
JULY 22ND, MONDAY 8:00PM - 9:00PM
JULY 26TH, FRIDAY 8:00PM - 9:00PM
JULY 27TH, SATURDAY 3:30PM - 4:30PM

FRINGE
FESTIVAL KC

VISUAL ARTS

KATHERYN KROUSE

Katheryn Krouse Art

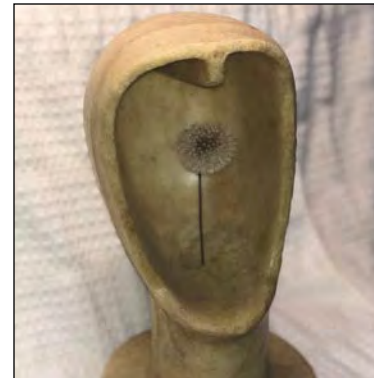
Celebrate Kansas City-centric art with vibrant color, textures, and alternative materials such as newspaper.



TYLER MARBLE

Rudimentary

Found object/scrap metal, abstract sculpture, some of the works are inspired by the human brain and how it works, also human anatomy, some is inspired by geometric designs, the earth and its elements, the universe, stars, and constellations. Tyler's inspiration is found all the way from the largest star down to the tiniest molecule, and then what makes it tick and keep it all together. He wants people to look at his art and see what They see. When you look at the sculptures that he has made he wants you to find something for yourself. www.artbymarble.com



CRAIG MILDREXLER

Power and Black Light Art

A variety of abstracts, still lifes and stylized subjects created in neon acrylic paint. All artwork sold are framed originals.



SYBIL PARIS-NOBLE

Sybil studied art therapy and received her BA from Avila University in 2006. She was the 2002 recipient of the "Avila Dallavis Award for Art." In 2007 she received the "Howie T Harp Art Award" at the Annual National Alternatives Conference. In 2010 she received the ArtsKC "Virtuoso Award" from The Arts Council of Greater KC. Sybil began "The Ark of Friends of Greater Kansas City" in 1996, which was a self-help support, education and advocacy organization, and she and her husband began and oversaw "The Ark of Friends Drop In Center" that served those who were dealing with mental health issues or were homeless and mentally ill. Sybil is a widow who lost her husband, Jerry, in 2017.



Sat July 20 @ 9:30 pm
Sun July 21 @ 1:30 pm
Wed July 24 @ 8:00 pm
Fri July 26 @ 6:30 pm
Sat July 27 @ 4:30 pm



The Kitchen Plays

Written by Leslie Revelle Zucker
Directed by Lindsay Adams

Accidental Points of View

Presented by Potluck Productions
Directed by Diane Bulan



Fri July 19 @ 6:30 pm
Sat July 20 @ 8:00 pm
Tue July 23 @ 6:30 pm
Thurs July 25 @ 8:00 pm
Sat July 27 @ 7:30 pm

JUST OFF BROADWAY
KAWAII OFF BROADWAY

Chapter of Seeking:

Momentum, In Time, 4 Love, Truth

Location: Kansas City Ballet's Bolender Center

Dates/Times: 7/20 @ 8pm . 7/21 @ 2pm

7/23 @ 6:30pm . 7/26 @ 9:30pm . 7/27 @ 5pm

Q&A after each performance

TRISTIAN
GRIFFIN



SARAH
FRANGENBERG

Expectation

Location: The Center for Spiritual Living

Dates/Times: 7/20 @ 9pm

7/21 @ 7:30pm . 7/24 @ 6pm

7/25 @ 7:30pm . 7/27 @ 4:30 pm

sponsored in part by www.the-frameshop.com

The Actor Training Studio can help you develop your talent as an actor, whether you're a fresh new talent, an accomplished pre-professional or a seasoned pro.

ACTOR TRAINING STUDIO

816.674.5601
5350 W. 94th Terrace #103
Prairie Village, KS 66207
ActorTrainingStudio.com



Individual and group classes for stage and film acting, voiceover, audiobook and public speaking.

T-MONEY IS CANCELLED
WRITTEN BY: PRISCA JEBET KENDAGOR
Directed by: Julia Moriarty

JULY 19TH 6:30PM
JULY 20TH 9:30PM
JULY 21ST 6:30PM
JULY 24TH 6:30PM
JULY 27TH 2:00PM

FRINGE FESTIVAL KC
JEROME STAGE
FEATURED AT THE UNION THEATRE

VISUAL ARTS

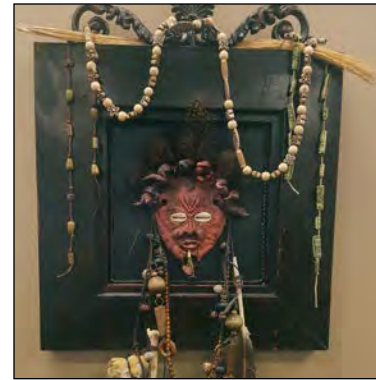


PATRICK PRIBYL

Dancing About Architecture

"Talking about music is like dancing about architecture." ~ Steve Martin.

Paired with inspiring and insightful quotes, these abstract paintings use a variety of techniques to serve as a colorful Rorschach test that evokes emotion in their inherent abstruseness. Acrylic & spray paint on canvas.



LESLEY RAVENHAIR

Spirit Guide Masks

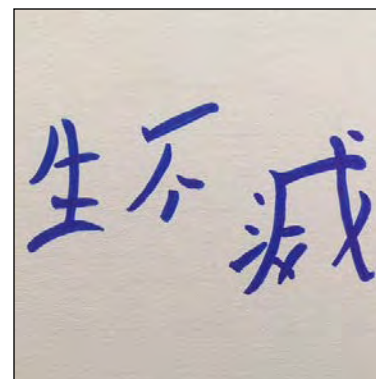
Polymer clay masks with natural elements in upcycled frames. Magical spirit guide masks to channel positive intentions, spirit guides, or used as a meditation focal point. These masks are inspired by New Orleans flare. The spirit guide mask concept originated as an invitation gift for Mardi Gras.



THE ROAD CREW

Where the Streets Have New Names

In a different kind of street photography, this exhibit documents at day in the life along the newly renamed Dr. Martin Luther King, Jr. Blvd. (formerly The Paseo), one of KC's most prominent historic boulevards. The Road Crew includes Joe Bussell, Bryan Colley, Jim Nimmo, Alexej Savreux, Greg Thonen, Cindy Tsutsumi, Brian Turner, and Sandy Woodson. They explored the entire ten miles of the boulevard from Cliff Drive to 85th Street over a single day, creating an artistic archive of a moment in history. Highlights will be exhibited at Union Station, while the full collection will be available at www.jupiterkansas.com.



ALEXEJ SAVREUX

A Silent Sermon

A Zen Monk asked his Zen Master to explain Zen to him. As the story goes, the Zen Master stood frozen-still his arms outstretched, opened his mouth as if about to give a great sermon on the mystery and nuance of Zen and then said absolutely nothing for ten minutes and then walked away. Instantly, the Zen Monk understood Zen. This theme is echoed in this collection abiding the power of silence in the form of mystery, nuance, and truth. It utilizes mixed media to pursue an altered spiritual state achieved through visual art.



WEIRDO

Weirdo: a perfectly normal lesbian contemporary ballet... Romance included

THE BLACK BOX • 1060 UNION AVE, KCMO 64101

FRI 19	SAT 20	TUE 23	FRI 26	SAT 27
6:30	5:00	6:30	8:00	2:00

A NEW VENUE FOR PERFORMING ARTISTS AND PRESENTERS CURATED BY FISHTANK THEATRE

THE BLACK BOX

FRINGE IN THE WEST BOTTOMS • 1060 UNION AVENUE



AND JESUS WEPT
JEREMIAH KAUFFMAN



HELP ME HELP YOU ME
ANNIE KALAHURKA



THE WOMEN OF CELL BLOCK 4
GIFTED SOUL PRODUCTIONS



WEIRDO: A PERFECTLY NORMAL LESBIAN CONTEMPORARY BALLET... ROMANCE INCLUDED
GLORIA BOEHM



PARA PENDEJO NO SE ESTUDIA
SEBASTIAN SMITH

FRIDAY JULY 19
6:30 WEIRDO
8:00 HELP ME HELP YOU ME
9:30 THE WOMEN OF CELL BLOCK 4

SATURDAY JULY 20
2:00 HELP ME HELP YOU ME
3:30 THE WOMEN OF CELL BLOCK 4
5:00 WEIRDO
6:30 AND JESUS WEPT

SUNDAY JULY 21
3:30 PARA PENDEJO NO SE ESTUNDA
5:00 AND JESUS WEPT
6:30 THE WOMEN OF CELL BLOCK 4

MONDAY JULY 22
6:30 PARA PENDEJO NO SE ESTUNDA
TUESDAY JULY 23
6:30 WEIRDO
8:00 PARA PENDEJO NO SE ESTUNDA

WEDNESDAY JULY 24
6:30 AND JESUS WEPT
8:00 THE WOMEN OF CELL BLOCK 4

THURSDAY JULY 25
8:00 HELP ME HELP YOU ME

FRIDAY JULY 26
6:30 AND JESUS WEPT
8:00 WEIRDO
9:30 HELP ME HELP YOU ME

SATURDAY JULY 27
2:00 WEIRDO
3:30 HELP ME HELP YOU ME
6:30 THE WOMEN OF CELL BLOCK 4
8:00 PARA PENDEJO NO SE ESTUNDA
9:30 AND JESUS WEPT

SUNDAY JULY 28
5:00 BEST OF THE BLACK BOX

WWW.FISHTANKTHEATRE.COM

VISUAL ARTS



MELANIE SHERMAN
mo-dus op-e-ran-di II

Melanie is a ceramic artist working mainly with porcelain and focusing on lavish surface decoration. Her work references exclusive and precious porcelain wares from 18th-century Europe as she seeks to capture the qualities for which porcelain has been known since its discovery thousands of years ago in China: whiteness, translucency, and resonance. She explores surface ornamentations and embellished shapes to gain more knowledge for her own studio practice, incorporating and referencing historic drawings, motives, and patterns into her work using traditional decorating methods.



SHERON SMITH
Kansas City Icons

Sheron takes liberty with color and texture in her "Kansas City Icons" collection. Her unique style and technique combine to bring Kansas City alive.



SHERI SO
The Return of Sunshine

Fresh air, sun, and the happiness that comes with the summer season, is what inspired this collection. Each piece has its own unique story that somehow connects itself with the characteristics of summertime. Bright colors in mixed mediums, botanical representations and the settings reminds viewers to slow down and enjoy the stroll.



VANIA SOTO
Nosotros

"Nosotros," the title of Vania's exhibit, is "US" in Spanish. This will be an exhibit celebrating indigenous persons from all the Americas.

VISUAL ARTS



SUSANNE ANDERSEN SZIPPL

Skyscapes and Microcosms

Susanne creates colorful imaginative paintings coming from letting the creative process go where it wants. Vibrant colors, shapes, and textures flow into intuitive and abstract works that mix with realistic and semi-realistic ones. Dreams, visions, and open skies fascinate her, as do butterflies, hummingbirds and plants. Acrylic on canvas, from 48" x 48" to 8" x 10".



ISAAC TAPIA

Quienes somos

Isaac's work consists mostly of portraits, people that I have met in his life and that have had some kind of impact in his life, from inspiring him to continue with his craft or inspired him by what they have accomplished with the community. The painting he creates are predominantly oil on canvas and oil on wood panel. There are instances that he uses acrylics and watercolors, but he loves the way oils feel on the canvas/wood panel. His inspiration definitely comes from the stories people tell him while he paints them, or perhaps some of the memories that he shares with them.



KEVINANNE TAYLOR

Art of KevinAnne-Modern/ Abstract Acrylic Paintings

As an artist, KevinAnne enjoy painting images that speak to her. There is a quiet, still space she finds herself in when she is painting. She enjoys the calmness and finds it very therapeutic to paint and try new forms of art. It's nice to let go and see where my art can take her. People she loves, their interests and her, as well as events in life are what drives her creative outlet and energy.

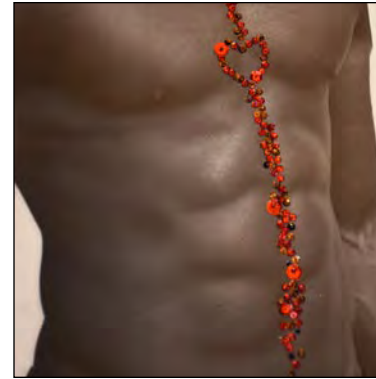


MARK WALTER

When Nature Speaks

This exhibit explores the co-existence of man-made structures and the natural world. What could nature be communicating? The 1st Century writings of the Apostle Paul record that we can clearly see God's invisible qualities, His eternal power and divine nature by the things that He has created. How is nature speaking to us? It is endlessly sending us messages, telling us we are not alone.

VISUAL ARTS



SANDY WOODSON

Family Jewels II: Shiny Objects.

In the animal kingdom the male of the species wears the brightest colors and goes to many extremes to attract a partner. Sadly, that does not always happen with the male of the human species, so Sandy finds she often has to add the sparkle.



MEG YOUNG

Forward Expansion

Experimenting with new materials, this collection also continues Meg's exploration of geometric abstraction. She likes to play with lines and shapes to create pieces that do not appear to be an obvious image, but instead to ask what it makes the viewer feel.



Just North of Kansas City's Historic Union Station
101 W 22nd St, 816-221-3722, lidias-kc.com

Mon-Fri Lunch 11-2, Dinner 5-9;
Sat-Sun Brunch 10:30-2, Dinner 4-9

Phil Kinen's Big Show Presents

FRINGE
FESTIVAL KC



YOU GET WHAT YOU NEED

The Non-Actual, Not-so-Factual Account of
Mick Jagger and The London Bach Choir

Just Off Broadway The4atre – 3051 Penn Valley Drive, KCMO

Fri 7/19 9:30p Sat 7/20 4:30pm

Mon 7/22 8p Fri 7/26 9:30p Sat 7/27 6pm

SHOW SCHEDULE **FRIDAY JULY 19**

	6:00	6:30	7:00	7:30	8:00	8:30	9:00	9:30	10:00	10:30
Arts Asylum		<i>Hanging by the End of the Leash</i> by Charlie Mike Theatre Company			<i>Scream in Blue</i> by Confluence Theatre Company			<i>Gleesical</i> by Faust Theatre		
Black Box		<i>Weirdo</i> by Gloria Boehm			<i>Help Me Help You Me</i> by Annie Kalahurka			<i>The Women of Cell Block 4</i> by Gifted Soul Productions		
Bolender Center		<i>Turning the Page</i> by VidaDance Company			<i>The Artist: Inspired</i> by Crescendo Conservatory			<i>For Whom the Comedy Panders</i> by John Dwyer		
Buffalo Room		<i>The Green Kanvaz Experience</i> by Green Kanvaz			<i>Pieces of My Heart</i> by Judy Simmons				<i>U Really Got a Hold On Me</i> by Br. John	
Just Off Broadway		<i>Accidental Points of View</i> by Potluck Productions			<i>Let Me Explain My Blackness</i> by Yaskween Productions			<i>You Get What You Need</i> by Big Show Productions		
Loretto Auditorium	<i>5 Plays</i> by the KC Improv Company			<i>Magic is Not Pretty</i> by C.K. Carey			<i>Enlarged to Show Texture</i> by Plan B Productions			
Loretto Chapel		<i>Lilly</i> by Lilly						<i>Musical Geography</i> by Chris Stephens World Music		
Loretto Commons	<i>What a Woman Wants</i> by Jamie Mayo			<i>kNew</i> by Poet TL Sanders			<i>I Proud Mary</i> by Suzette Woods			
Metropolitan Ensemble Theatre		<i>Bones Beneath the Sidewalk</i> by Colleen Enna			<i>In Just My Underwear</i> by Tony Sloan			<i>Final Curtain</i> by Delta Heart Productions		
Unicorn Levin Stage				<i>Caitlin Cook: Death Wish</i> by Caitlin Cook			<i>Jeannette Rankin: Champion of Persistence</i> by Thorn Productions			
Unicorn Jerome Stage		<i>T-Money is Cancelled</i> by Impact Productions			<i>Donating Sperm to My Sister's Wife</i> by Stewart Huff			<i>The Family Continues</i> by Flyover Works		
Union Station City Stage	<i>Fantasma vs. the Vampire Women</i> by Right Between the Ears			<i>The SHIFT SHOW!</i> by Jade Osborne			<i>Six Degrees of Defecation</i> by Brie Henderson			
Westport Coffeehouse	<i>The Lightweight</i> by Lil Theatre Company			<i>Red Clay Country and White Cloverine Salve</i> by Mike and Nancee Micham			<i>Beneath the Bikini</i> by Bikini Katie Productions			

	1:30	2:00	2:30	3:00	3:30	4:00	4:30	5:00	5:30	6:00	6:30	7:00	7:30	8:00	8:30	9:00	9:30	10:00	10:30	11:00
Arts Asylum		<i>Scream in Blue</i> by Confluence Theatre Company			<i>Gleesical</i> by Faust Theatre			<i>The "Sin"-sational Mae West</i> by Kristine Norvaishas			<i>You Are (Not) Okay</i> by Subject to Change Theatre			<i>The Young Life and Troubled Times of Reuben Hall</i> by Lucky Bastard Productions			<i>Hanging by the End of the Leash</i> by Charlie Mike Theatre Company			
Black Box		<i>Help Me Help Me Me</i> by Annie Kalahurka			<i>The Women of Cell Block 4</i> by Gifted Soul Productions			<i>Weirdo</i> by Gloria Boehm			<i>And Jesus Wept</i> by Jeremiah Kauffman			<i>Para Pendejo No Se Estudia</i> by Sebastian Smith						
Bolender Center		<i>The Artist: Inspired</i> by Crescendo Conservatory			<i>Turning the Page</i> by VidaDance Company			<i>The Greatest-er Show at Fringe</i> by KC Aerial Arts and VidaDance Company			<i>For Whom the Comedy Panders</i> by John Dwyer			<i>The Chapters of Seeking</i> by Tristian Griffin			<i>Life of an Empath</i> by Beautiful Butterflies			
Buffalo Room						<i>Caddy Shakes</i> by Fairbanks Shakespeare Theatre					<i>Collidoscope</i> by Collidoscope			<i>The Green Kanvaz Experience</i> by Green Kanvaz				<i>Pieces of My Heart</i> by Judy Simmons		
Center for Spiritual Living				<i>I Could Take a Nap, but Killing Myself Would be More Productive</i> by Cloud 9 Productions			<i>Emily the Musical</i> by Isabella Pichardo			<i>Man Cave</i> by Timothy Mooney						<i>Expectation</i> by Sarah Frangenberg				
Just Off Broadway	<i>Look What the Fire Did</i> by Lewis Morrow			<i>Let Me Explain My Blackness</i> by Yaskween Productions			<i>You Get What You Need</i> by Big Show Productions				<i>Deceit</i> by Relevance Productions			<i>Accidental Points of View</i> by Potluck Productions			<i>The Kitchen Plays</i> by Lezlie Revelle Zucker			
Loretto Auditorium							<i>Enlarged to Show Texture</i> by Plan B Productions			<i>Bang</i> by Dan Born			<i>An Old Troubadour and His Guitar</i> by Jim Cogswell			<i>5 Plays</i> by the KC Improv Company				
Loretto Chapel		<i>Lilly</i> by Lilly									<i>Five and a Half Feet of Fearsome</i> by Shannon Savard			<i>Pirates in Corsets, or PMS Pinafore</i> by Pirates Arrgh Us			<i>Musical Geography</i> by Chris Stephens World Music			
Loretto Commons							<i>I Proud Mary</i> by Suzette Woods			<i>Puerto Rican American Gothic</i> by Emmy Rivera			<i>Yeti and Me</i> by Good Friends Productions			<i>What a Woman Wants</i> by Jamie Mayo				
Metropolitan Ensemble Theatre		<i>In Just My Underwear</i> by Tony Sloan			<i>Final Curtain</i> by Delta Heart Productions			<i>Dreams Do Come True</i> by Kent Rader			<i>Is This a Test?</i> by EmMarie Quirk			<i>MUTTNIK</i> by BC Theatricals			<i>Bones Beneath the Sidewalk</i> by Colleen Enna			
Unicorn Levin Stage				<i>Caitlin Cook: Death Wish</i> by Caitlin Cook			<i>Jeannette Rankin: Champion of Persistence</i> by Thorn Productions			<i>Sides of History</i> by Skulldog Productions			<i>Hope Help Line</i> by Liz Kerlin							
Unicorn Jerome Stage		<i>Donating Sperm to My Sister's Wife</i> by Stewart Huff			<i>The Family Continues</i> by Flyover Works			<i>The Summer House</i> by Christie Kennard by Rising Tide Productions			<i>With Me, and Such as Me, It is Different</i> by Ahafia Jurkiewicz-Miles			<i>Cowboy Mouth</i> by THUD Productions			<i>T-Money is Cancelled</i> by Impact Productions			
Union Station City Stage							<i>Fantasma vs. the Vampire Women</i> by Right Between the Ears			<i>Mercy</i> by CAGKC			<i>Big Top</i> by David Gaines			<i>Flights of Faery Fancy</i> by Voler Aerial Academy			<i>Six Degrees of Defecation</i> by Brie Henderson	
Westport Coffeehouse							<i>The Lightweight</i> by Lil Theatre Company			<i>KC's Magic Showcase</i> by the Society of American Magicians						<i>War Paint</i> by Bored at Midnight Productions			<i>Beneath the Bikini</i> by Bikini Katie Productions	

SHOW SCHEDULE SUNDAY JULY 21

VENUE	1:30	2:00	2:30	3:00	3:30	4:00	4:30	5:00	5:30	6:00	6:30	7:00	7:30	8:00
Arts Asylum		<i>The Young Life...</i> by Lucky Bastard Productions			<i>The "Sin"-sational Mae West</i> by Kristine Norvaishas			<i>You Are (Not) Okay</i> by Subject to Change Theatre			<i>Hanging by the End of the Leash</i> by Charlie Mike Theatre			
Black Box					<i>Para Pendejo No Se Estudia</i> by Sebastian Smith			<i>And Jesus Wept</i> by Jeremiah Kauffman			<i>Women of Cell Block 4</i> by Gifted Soul Prod.			
Bolender Center		<i>The Chapters of Seeking</i> by Tristian Griffin			<i>The Greatest-er Show at Fringe</i> by KC Aerial Arts and VidaDance			<i>Life of an Empath</i> by Beautiful Butterflies			<i>The Artist: Inspired</i> by Crescendo Conservatory			
Buffalo Room		<i>Collidescope</i> by Collidescope				<i>U Really Got a Hold On Me</i> by Br. John				<i>Caddy Shakes</i> by Fairbanks Shakespeare				
Center for Spiritual Living				<i>Emily the Musical</i> by Isabella Pichardo				<i>Man Cave</i> by Timothy Mooney					<i>Expectation</i> by Sarah Frangenberg	
Just Off Broadway	<i>The Kitchen Plays</i> by Lezlie Revelle Zucker			<i>Deceit</i> by Relevance Productions			<i>Local Film Works</i> by Melting Pot Films				<i>Look What the Fire Did</i> by Lewis Morrow			
Loretto Auditorium				<i>An Old Troubadour...</i> by Jim Cogswell			<i>Bang</i> by Dan Born			<i>Magic is Not Pretty</i> by C.K. Carey				
Loretto Chapel		<i>Musical Geography</i> by Chris Stephens World Music			<i>Five and a Half Feet of Fearsome</i> by Shannon Savard						<i>Pirates in Corsets, or PMS Pinafore</i> by Pirates Arrgh Us			
Loretto Commons				<i>Yeti and Me</i> by Good Friends Productions			<i>Puerto Rican American Gothic</i> by Emmy Rivera			<i>kNew</i> by Poet TL Sanders				
Metropolitan Ensemble Theatre		<i>Is This a Test?</i> by EmMarie Quirk			<i>Dreams Do Come True</i> by Kent Rader			<i>MUTTNIK</i> by BC Theatricals			<i>Bones Beneath the Sidewalk</i> by Colleen Enna			
Unicorn Levin Stage				<i>Hope Help Line</i> by Liz Kerlin			<i>Sides of History</i> by Skulldog Productions				<i>Caitlin Cook: Death Wish</i> by Caitlin Cook			
Unicorn Jerome Stage		<i>With Me...</i> by Ahafia Jurkiewicz-Miles			<i>The Summer House</i> by Rising Tide Productions			<i>Cowboy Mouth</i> by THUD Productions			<i>T-Money is Cancelled</i> by Impact Productions			
Union Station City Stage	<i>Big Top</i> by David Gaines			<i>The SHIFT SHOW!</i> by Jade Osborne			<i>Flights of Faery Fancy</i> by Voler Aerial Academy				<i>Six Degrees of Defecation</i> by Brie Henderson			
Westport Coffeehouse				<i>KC's Magic Showcase</i> by Society of Amer. Magicians			<i>War Paint</i> by Bored at Midnight Productions				<i>Beneath the Bikini</i> by Bikini Katie Productions			

SHOW SCHEDULE MONDAY JULY 22

VENUE	6:00	6:30	7:00	7:30	8:00	8:30	9:00	9:30	10:00
Arts Asylum			<i>Gleesical</i> by Faust Theatre			<i>You Are (Not) Okay</i> by Subject to Change Theatre			
Black Box			<i>Para Pendejo No Se Estudia</i> by Sebastian Smith						
Bolender Center			<i>Turning the Page</i> by VidaDance Company			<i>Life of an Empath</i> by Beautiful Butterflies			
Buffalo Room	<i>Pieces of My Heart</i> by Judy Simmons					<i>Collidescope</i> by Collidescope			
Center for Spiritual Living	<i>I Could Take a Nap, but Killing Myself Would be More Productive</i> by Cloud 9 Productions				<i>Man Cave</i> by Timothy Mooney				
Just Off Broadway			<i>Let Me Explain My Blackness</i> by Yaskween Productions			<i>You Get What You Need</i> by Big Show Productions			<i>Local Film Works</i> by Melting Pot Films
Loretto Auditorium	<i>5 Plays</i> by the KC Improv Company			<i>Enlarged to Show Texture</i> by Plan B Productions					
Loretto Chapel					<i>Pirates in Corsets, or PMS Pinafore</i> by Pirates Arrgh Us				<i>Lilly</i> by Lilly
Loretto Commons	<i>What a Woman Wants</i> by Jamie Mayo			<i>I Proud Mary</i> by Suzette Woods					
Metropolitan Ensemble Theatre			<i>MUTTNIK</i> by BC Theatricals			<i>Final Curtain</i> by Delta Heart Productions			
Unicorn Levin Stage	<i>Jeannette Rankin: Champion of Persistence</i> by Thorn Productions				<i>Caitlin Cook: Death Wish</i> by Caitlin Cook				
Unicorn Jerome Stage			<i>The Family Continues</i> by Flyover Works			<i>Cowboy Mouth</i> by THUD Productions			
Union Station City Stage	<i>Fantasma vs. the Vampire Women</i> by Right Between the Ears			<i>Flights of Faery Fancy</i> by Voler Aerial Academy				<i>Mercy</i> by CAGKC	
Westport Coffeehouse	<i>The Lightweight</i> by Lil Theatre Company			<i>War Paint</i> by Bored at Midnight Productions				<i>Red Clay Country and White Cloverine Salve</i> by Mike and Nancee Micham	

SHOW SCHEDULE **TUESDAY JULY 23**

VENUE	6:00	6:30	7:00	7:30	8:00	8:30	9:00	9:30	10:00
Arts Asylum		<i>The "Sin"-sational Mae West</i> by Kristine Norvaishas			<i>The Young Life and Troubled Times of Reuben Hall</i> by Lucky Bastard Productions				
Black Box		<i>Weirdo</i> by Gloria Boehm			<i>Para Pendejo No Se Estudia</i> by Sebastian Smith				
Bolender Center		<i>The Chapters of Seeking</i> by Tristian Griffin			<i>For Whom the Comedy Panders</i> by John Dwyer				
Buffalo Room	<i>Caddy Shakes</i> by Fairbanks Shakespeare Theatre				<i>The Green Kanvaz Experience</i> by Green Kanvaz				
Center for Spiritual Living				<i>Emily the Musical</i> by Isabella Pichardo					
Just Off Broadway		<i>Accidental Points of View</i> by Potluck Productions			<i>Deceit</i> by Relevance Productions			<i>Local Film Works</i> by Melting Pot Films	
Loretto Auditorium	<i>Bang</i> by Dan Born			<i>An Old Troubadour and His Guitar</i> by Jim Cogswell					
Loretto Chapel					<i>Five and a Half Feet of Fearsome</i> by Shannon Savard				
Loretto Commons	<i>Puerto Rican American Gothic</i> by Emmy Rivera			<i>Yeti and Me</i> by Good Friends Productions					
Metropolitan Ensemble Theatre		<i>Dreams Do Come True</i> by Kent Rader			<i>Is This a Test?</i> by EmMarie Quirk				
Unicorn Levin Stage	<i>Caitlin Cook: Death Wish</i> by Caitlin Cook			<i>Sides of History</i> by Skulldog Productions					
Unicorn Jerome Stage		<i>The Summer House</i> by Christie Kennard by Rising Tide Productions			<i>With Me, and Such as Me, It is Different</i> by Ahafia Jurkiewicz-Miles				
Union Station City Stage	<i>The SHIFT SHOW!</i> by Jade Osborne			<i>Big Top</i> by David Gaines					
Westport Coffeehouse	<i>KC's Magic Showcase</i> by the Society of American Magicians								

SHOW SCHEDULE **WEDNESDAY JULY 24**

VENUE	6:00	6:30	7:00	7:30	8:00	8:30	9:00	9:30	10:00
Arts Asylum		<i>Hanging by the End of the Leash</i> by Charlie Mike Theatre Company			<i>Scream in Blue</i> by Confluence Theatre Company				
Black Box		<i>And Jesus Wept</i> by Jeremiah Kauffman			<i>The Women of Cell Block 4</i> by Gifted Soul Productions				
Bolender Center		<i>The Artist: Inspired</i> by Crescendo Conservatory			<i>The Greatest-er Show at Fringe</i> by KC Aerial Arts and VidaDance Company				
Buffalo Room	<i>U Really Got a Hold On Me</i> by Br. John				<i>Pieces of My Heart</i> by Judy Simmons				
Center for Spiritual Living	<i>Expectation</i> by Sarah Frangenberg			<i>I Could Take a Nap, but Killing Myself Would be More Productive</i> by Cloud 9 Productions					
Just Off Broadway		<i>Look What the Fire Did</i> by Lewis Morrow			<i>The Kitchen Plays</i> by Lezlie Revelle Zucker			<i>Local Film Works</i> by Melting Pot Films	
Loretto Auditorium	<i>5 Plays</i> by the KC Improv Company			<i>Magic is Not Pretty</i> by C.K. Carey					
Loretto Chapel					<i>Lilly</i> by Lilly				
Loretto Commons	<i>What a Woman Wants</i> by Jamie Mayo			<i>kNew</i> by Poet TL Sanders					
Metropolitan Ensemble Theatre		<i>Bones Beneath the Sidewalk</i> by Colleen Enna			<i>In Just My Underwear</i> by Tony Sloan				
Unicorn Levin Stage				<i>Hope Help Line</i> by Liz Kerlin					
Unicorn Jerome Stage		<i>T-Money is Cancelled</i> by Impact Productions			<i>Donating Sperm to My Sister's Wife</i> by Stewart Huff				
Union Station City Stage	<i>Six Degrees of Defecation</i> by Brie Henderson			<i>Mercy</i> by CAGKC					
Westport Coffeehouse	<i>Beneath the Bikini</i> by Bikini Katie Productions			<i>Red Clay Country and White Cloverine Salve</i> by Mike and Nancee Micham					

SHOW SCHEDULE THURSDAY JULY 25

VENUE	6:00	6:30	7:00	7:30	8:00	8:30	9:00	9:30	10:00
Arts Asylum		<i>Scream in Blue</i> by Confluence Theatre Company			<i>Gleesical</i> by Faust Theatre				
Black Box					<i>Help Me Help You Me</i> by Annie Kalahurka				
Bolender Center		<i>The Greatest-er Show at Fringe</i> by KC Aerial Arts and VidaDance Company			<i>Turning the Page</i> by VidaDance Company				
Buffalo Room	<i>The Green Kanvaz Experience</i> by Green Kanvaz				<i>U Really Got a Hold On Me</i> by Br. John				
Center for Spiritual Living	<i>I Could Take a Nap, but Killing Myself Would be More Productive</i> by Cloud 9 Productions			<i>Expectation</i> by Sarah Frangenberg					
Just Off Broadway		<i>Let Me Explain My Blackness</i> by Yaskween Productions			<i>Accidental Points of View</i> by Potluck Productions			<i>Deceit</i> by Relevance Productions	
Loretto Auditorium	<i>Magic is Not Pretty</i> by C.K. Carey			<i>Enlarged to Show Texture</i> by Plan B Productions					
Loretto Chapel								<i>Musical Geography</i> by Chris Stephens World Music	
Loretto Commons	<i>kNew</i> by Poet TL Sanders			<i>I Proud Mary</i> by Suzette Woods					
Metropolitan Ensemble Theatre		<i>In Just My Underwear</i> by Tony Sloan			<i>Final Curtain</i> by Delta Heart Productions				
Unicorn Levin Stage				<i>Jeannette Rankin: Champion of Persistence</i> by Thorn Productions					
Unicorn Jerome Stage		<i>Donating Sperm to My Sister's Wife</i> by Stewart Huff			<i>The Family Continues</i> by Flyover Works				
Union Station City Stage	<i>Mercy</i> by CAGKC			<i>Fantasma vs. the Vampire Women</i> by Right Between the Ears					
Westport Coffeehouse	<i>Red Clay Country and White Cloverine Salve</i> by Mike and Nancee Micham			<i>The Lightweight</i> by Lil Theatre Company					

SHOW SCHEDULE FRIDAY JULY 26

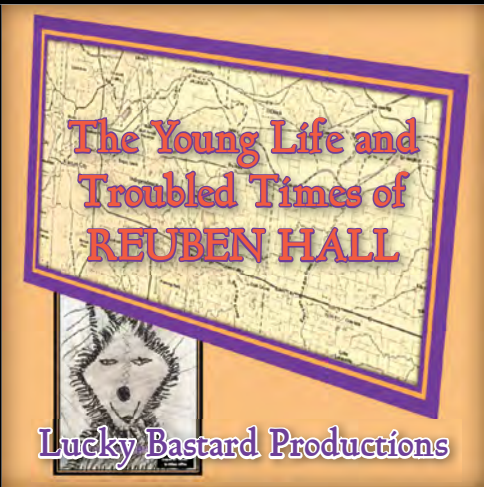
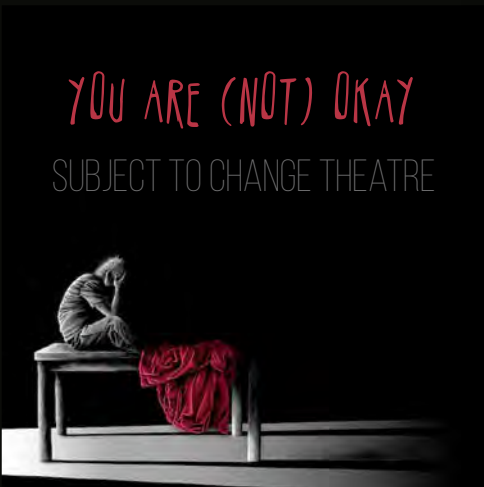
VENUE	6:00	6:30	7:00	7:30	8:00	8:30	9:00	9:30	10:00	10:30
Arts Asylum		<i>The Young Life and Troubled Times of Reuben Hall</i> by Lucky Bastard Productions			<i>You Are (Not) Okay</i> by Subject to Change Theatre			<i>The "Sin"-sational Mae West</i> by Kristine Norvaishas		
Black Box		<i>And Jesus Wept</i> by Jeremiah Kauffman			<i>Weirdo</i> by Gloria Boehm			<i>Help Me Help You Me</i> by Annie Kalahurka		
Bolender Center		<i>For Whom the Comedy Panders</i> by John Dwyer			<i>Life of an Empath</i> by Beautiful Butterflies			<i>The Chapters of Seeking</i> by Tristian Griffin		
Buffalo Room	<i>Collidescope</i> by Collidescope				<i>Caddy Shakes</i> by Fairbanks Shakespeare Theatre				<i>The Green Kanvaz Experience</i> by Green Kanvaz	
Center for Spiritual Living				<i>Man Cave</i> by Timothy Mooney			<i>Emily the Musical</i> by Isabella Pichardo			
Just Off Broadway		<i>The Kitchen Plays</i> by Lezlie Revelle Zucker			<i>Look What the Fire Did</i> by Lewis Morrow			<i>You Get What You Need</i> by Big Show Productions		
Loretto Auditorium	<i>An Old Troubadour and His Guitar</i> by Jim Cogswell			<i>5 Plays</i> by the KC Improv Company			<i>Bang</i> by Dan Born			
Loretto Chapel		<i>Five and a Half Feet of Fearsome</i> by Shannon Savard			<i>Pirates in Corsets, or PMS Pinafore</i> by Pirates Arrgh Us					
Loretto Commons	<i>Yeti and Me</i> by Good Friends Productions			<i>What a Woman Wants</i> by Jamie Mayo			<i>Puerto Rican American Gothic</i> by Emmy Rivera			
Metropolitan Ensemble Theatre		<i>Is This a Test?</i> by EmMarie Quirk			<i>MUTNIK</i> by BC Theatricals			<i>Dreams Do Come True</i> by Kent Rader		
Unicorn Levin Stage	<i>Hope Help Line</i> by Liz Kerlin						<i>Sides of History</i> by Skulldog Productions			
Unicorn Jerome Stage		<i>With Me, and Such as Me, It is Different</i> by Ahafia Jurkiewicz-Miles			<i>Cowboy Mouth</i> by THUD Productions			<i>The Summer House</i> by Christie Kennard by Rising Tide Productions		
Union Station City Stage	<i>Flights of Faery Fancy</i> by Voler Aerial Academy			<i>Big Top</i> by David Gaines			<i>The SHIFT SHOW!</i> by Jade Osborne			
Westport Coffeehouse				<i>War Paint</i> by Bored at Midnight Productions			<i>KC's Magic Showcase</i> by the Society of American Magicians			

VENUE	1:30	2:00	2:30	3:00	3:30	4:00	4:30	5:00	5:30	6:00	6:30	7:00	7:30	8:00	8:30	9:00	9:30	10:00	10:30	11:00	
Arts Asylum		<i>Hanging by the End of the Leash</i> by Charlie Mike Theatre Company			<i>You Are (Not) Okay</i> by Subject to Change Theatre			<i>The Young Life and Troubled Times of Reuben Hall</i> by Lucky Bastard Productions			<i>Gleesical</i> by Faust Theatre			<i>The "Sin"-sational Mae West</i> by Kristine Norvaishas			<i>Scream in Blue</i> by Confluence Theatre Company				
Black Box		<i>Weirdo</i> by Gloria Boehm			<i>Help Me Help You Me</i> by Annie Kalahurka						<i>The Women of Cell Block 4</i> by Gifted Soul Productions			<i>Para Pendejo No Se Estudia</i> by Sebastian Smith			<i>And Jesus Wept</i> by Jeremiah Kauffman				
Bolender Center		<i>Turning the Page</i> by VidaDance Company			<i>Life of an Empath</i> by Beautiful Butterflies			<i>The Chapters of Seeking</i> by Tristian Griffin			<i>The Artist: Inspired</i> by Crescendo Conservatory			<i>The Greatest-er Show at Fringe</i> by KC Aerial Arts and VidaDance Company			<i>For Whom the Comedy Panders</i> by John Dwyer				
Buffalo Room						<i>Pieces of My Heart</i> by Judy Simmons				<i>U Really Got a Hold On Me</i> by Br. John				<i>Collidescope</i> by Collidescope				<i>Caddy Shakes</i> by Fairbanks Shakespeare Theatre			
Center for Spiritual Living							<i>Expectation</i> by Sarah Frangenberg			<i>Emily the Musical</i> by Isabella Pichardo			<i>I Could Take a Nap, but Killing Myself Would be More Productive</i> by Cloud 9 Productions			<i>Man Cave</i> by Timothy Mooney					
Just Off Broadway	<i>Deceit</i> by Relevance Productions			<i>Look What the Fire Did</i> by Lewis Morrow			<i>The Kitchen Plays</i> by Lezlie Revelle Zucker				<i>You Get What You Need</i> by Big Show Productions			<i>Accidental Points of View</i> by Potluck Productions			<i>Let Me Explain My Blackness</i> by Yaskween Productions			<i>Local Film Works</i> by Melting Pot Films	
Loretto Auditorium							<i>An Old Troubadour and His Guitar</i> by Jim Cogswell			<i>Enlarged to Show Texture</i> by Plan B Productions			<i>Bang</i> by Dan Born			<i>Magic is Not Pretty</i> by C.K. Carey					
Loretto Chapel		<i>Musical Geography</i> by Chris Stephens World Music			<i>Pirates in Corsets, or PMS Pinafore</i> by Pirates Arrgh Us			<i>Five and a Half Feet of Fearsome</i> by Shannon Savard									<i>Lilly</i> by Lilly				
Loretto Commons							<i>Yeti and Me</i> by Good Friends Productions			<i>I Proud Mary</i> by Suzette Woods			<i>Puerto Rican American Gothic</i> by Emmy Rivera			<i>kNew</i> by Poet TL Sanders					
Metropolitan Ensemble Theatre		<i>Bones Beneath the Sidewalk</i> by Colleen Enna			<i>MUTTNIK</i> by BC Theatricals			<i>Is This a Test?</i> by EmMarie Quirk			<i>Final Curtain</i> by Delta Heart Productions			<i>Dreams Do Come True</i> by Kent Rader			<i>In Just My Underwear</i> by Tony Sloan				
Unicorn Levin Stage										<i>Jeannette Rankin: Champion of Persistence</i> by Thorn Productions			<i>Sides of History</i> by Skulldog Productions			<i>Hope Help Line</i> by Liz Kerlin					
Unicorn Jerome Stage		<i>T-Money is Cancelled</i> by Impact Productions			<i>Cowboy Mouth</i> by THUD Productions			<i>With Me, and Such as Me, It is Different</i> by Ahafia Jurkiewicz-Miles			<i>The Family Continues</i> by Flyover Works			<i>The Summer House</i> by Christie Kennard by Rising Tide Productions			<i>Donating Sperm to My Sister's Wife</i> by Stewart Huff				
Union Station City Stage	<i>Six Degrees of Defecation</i> by Brie Henderson			<i>Flights of Faery Fancy</i> by Voler Aerial Academy			<i>The SHIFT SHOW!</i> by Jade Osborne			<i>Big Top</i> by David Gaines			<i>Mercy</i> by CAGKC			<i>Fantasma vs. the Vampire Women</i> by Right Between the Ears					
Westport Coffeehouse				<i>Beneath the Bikini</i> by Bikini Katie Productions			<i>War Paint</i> by Bored at Midnight Productions			<i>KC's Magic Showcase</i> by the Society of American Magicians						<i>Red Clay Country and White Cloverine Salve</i> by Mike and Nancee Micham			<i>The Lightweight</i> by Lil Theatre Company		

The Arts Asylum

That funky Fringe venue in the Northeast

1000 E 9th Street



Turn the page for showtimes →

BEST OF FRINGE

BEST OF FRINGE

SUNDAY, JULY 28

The show with the best average attendance at each venue will receive a bonus performance at that venue. Best of Fringe winners will be announced on our website kcfringe.org at midnight on Saturday, July 27. The showtimes at each venue are below.

2:00	2:30	3:00	3:30	4:00	4:30	5:00	5:30
<i>Best of the Arts Asylum</i>				<i>Best of the Bolender Center</i>			<i>Best of the Black Box</i>
<i>Best of the Buffalo Room</i>				<i>Best of Just Off Broadway</i>			<i>Best of the Center for Spiritual Living</i>
<i>Best of Loretto Chapel</i>				<i>Best of Loretto Commons</i>			<i>Best of Loretto Auditorium</i>
<i>Best of Unicorn Levin Stage</i>				<i>Best of Union Station City Stage</i>			<i>Best of Metropolitan Ensemble Theatre</i>
				<i>Best of Westport Coffeehouse</i>			<i>Best of Unicorn Jerome Stage</i>



ARTS ASYLUM

1000 E 9th Street
Best of Venue: 2:00pm Sunday, July 28



GLEESICAL

A STAGE MUSICAL SATIRE OF THE HIT FOX TV SHOW GLEE

FAUST THEATRE

FRI 19	SAT 20	MON 22	THU 25	SAT 27
9:30	3:30	6:30	8:00	6:30

Join your favorite glee club underdogs as they navigate relationships, sexuality, teen pregnancy, finding a voice against the popular kids, and the never-ending terror of a wicked cheerleading coach in the world of show choir. Written by Zach Faust with Madison Dodd & Bree Patterson. Directed by Zach Faust. Music Directed by Daniel Verschelden. #gleesical

FAUSTTHEATRE.COM • THEATRE • RATED PG



THE "SIN"-SATIONAL MAE WEST

KRISTINE NORVAISHAS

SAT 20	SUN 21	TUE 23	FRI 26	SAT 27
5:00	3:30	6:30	9:30	8:00

The "SIN"-sational Mae West is a snapshot of the life and career of the actress, sex symbol, playwright, and icon, Mae West. Highlighting her career from vaudeville to her time on the silver screen, all the way to her very public arrest for allegedly "corrupting the morals of youth."

THEATRE • RATED PG



HANGING BY THE END OF THE LEASH

CHARLIE MIKE THEATRE COMPANY

FRI 19	SAT 20	SUN 21	WED 24	SAT 27
6:30	9:30	6:30	6:30	2:00

Comedic monologues interspersed with "real world" skits, you'll learn what it's really like to navigate the world as a disabled female veteran with a service dog. Based on the life of and starring Buster Brown the Service dog *Hanging by the End of the Leash* uses adult humor to shed a little light on the reality of being a service dog team. We'll answer the most commonly asked question: What is it like to have a service dog? Because at the end of the day we're all just hanging on by the end.

CHARLIEMIKETC.ORG • THEATRE • RATED PG



YOU ARE (NOT) OKAY

SUBJECT TO CHANGE THEATRE

SAT 20	SUN 21	MON 22	FRI 26	SAT 27
6:30	5:00	8:00	8:00	3:30

The Boy must go on a journey of self-discovery through his subconscious to figure out who he really is while dealing with increasingly bizarre scenarios. Will he be able to confront his true feelings, or will he be doomed to stay stuck in a bad situation forever? Featuring Peter Morgan, Jon Rizzo, Sara Marie-Nichol Wilson, Chelsea Leaver, and Korrie Murphy. Written by Joshua Woodall and directed by Malcolm Gibbs.

SUBJECTTOCHANGETHEATRE.COM • THEATRE • RATED R



SCREAM IN BLUE

CONFLUENCE THEATRE COMPANY

FRI 19	SAT 20	WED 24	THU 25	SAT 27
8:00	2:00	8:00	6:30	9:30

The Confluence Theatre Company has partnered with Kabuku Butoh to create a unique night of dance and theatre. *Scream in Blue* combines both metaphysical and emotional mindscapes with only the human body as a vehicle for expression. If you were captivated by the "Best of" *Liminal State* from 2017's Fringe Festival, then *Scream in Blue* is a must see as the Butoh form is pushed to new extremes.

DANCE • RATED PG



THE YOUNG LIFE AND TROUBLED TIMES OF REUBEN HALL

LUCKY BASTARD PRODUCTIONS

SAT 20	SUN 21	TUE 23	FRI 26	SAT 27
8:00	2:00	8:00	6:30	5:00

This one-man show is based on poems, songs, rants and other musings written between 1980-1995 and is based loosely on the real life events of the young and troubled Reuben Hall. Co-written by Jeph Scanlon and Philip blue owl Hooser. Directed by Philip blue owl Hooser. Performed and read by Jeph Scanlon.

THEATRE • RATED R

THE BLACK BOX

1060 Union Avenue
Best of Venue: 5:00pm Sunday, July 28



AND JESUS WEPT

JEREMIAH KAUFFMAN

SAT 20	SUN 21	WED 24	FRI 26	SAT 27
6:30	5:00	6:30	6:30	9:30

After coming out as gay to his parents, Daniel receives a notice of immediate eviction from his enraged father, a Baptist preacher. The young college student flees to a dark and deserted city park to reflect on his options. As he ponders whether his life is worth living, he is joined unexpectedly by a kind stranger who urges him to consider the value of his life and return home to reconcile with his father. That night, Daniel will face the most difficult decision anyone could ever have to make.

THEATRE • RATED R



GUSWELLE AND DOLAN

RYAN PATRICK DOLAN

THIS EVENT HAS BEEN CANCELLED



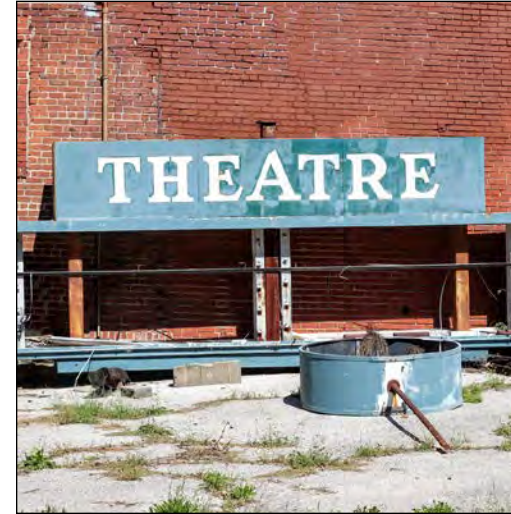
HELP ME HELP YOU ME

ANNIE KALAHURKA

FRI 19	SAT 20	THU 25	FRI 26	SAT 27
8:00	2:00	8:00	9:30	3:30

What happens when we say yes to our deepest desires and give ourselves permission to live differently? Join this self help-aholic on her quest to rewrite her own program. A joyous jaunt through the misadventures of one artist escaping her 9 to 5 to reconnect with her life's passion. Part musical. Part comedy. Part memoir. All heart!

ANNIEKALAHURKA.COM • THEATRE • RATED R



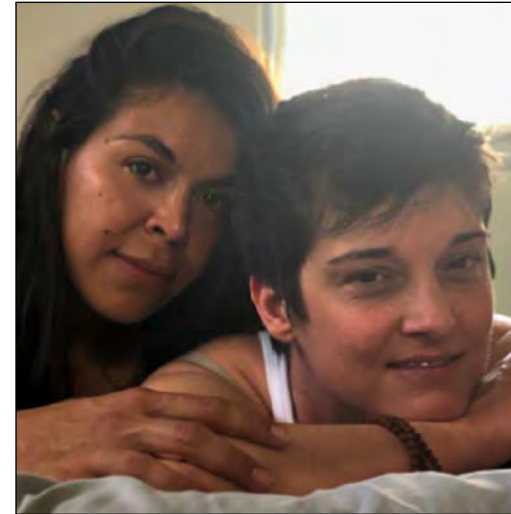
PARA PENDEJO NO SE ESTUDIA

SEBASTIAN SMITH

SAT 20	SUN 21	MON 22	TUE 23	SAT 27
8:00	3:30	6:30	8:00	8:00

An immigrant story the way it deserves to be told: By a straight white man! Join me as I reflect on the story of the bravest women you've never met. Sebastian is an actor, improviser and video producer in Kansas City. He earned a degree in Theater and Video from Missouri Western State University and has performed at ComedyCity, The Living Room Theater, New Theater Restaurant and Worlds of Fun as Santa.

FACEBOOK.COM/SSMITH.ACTOR • COMEDY • RATED G



WEIRDO

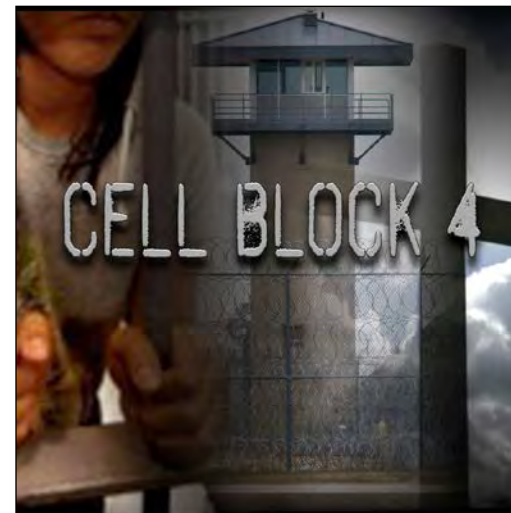
A PERFECTLY NORMAL LESBIAN CONTEMPORARY BALLET... ROMANCE INCLUDED

GLORIA BOEHM

FRI 19	SAT 20	TUE 23	FRI 26	SAT 27
6:30	5:00	6:30	8:00	2:00

This groundbreaking work in progress seeks to recalibrate how and who we see in dance. Females of color are featured, all body types are celebrated, females partner each other, in this tale of two women who meet back in the day at the club, get split up by a police presence pre-social media, and make a love connection at last. Being a weirdo is legit! Rue Jean is co-producer and assistant director. #stopsuicidenow

FACEBOOK.COM/WEIRDOKCMO • THEATRE • RATED R



THE WOMEN OF CELL BLOCK 4

GIFTED SOUL PRODUCTIONS

FRI 19	SAT 20	SUN 22	WED 24	SAT 27
9:30	3:30	6:30	8:00	6:30

Three women of varying backgrounds have two things in common they've all suffered at the hands of others and now all three are on death row. Now with their fate seemingly decided, one woman vows to find the freedom her body may never know through spirituality, while leading other women to do the same. A story about forgiveness, redemption, freedom and God's mercy makes its debut at this year's KC Fringe Festival. Written by published author Lashenna S. Flowers.

LASHENNAFLOWERS.COM • THEATRE • RATED R

THE BOLENDER CENTER

Kansas City Ballet, 500 West Pershing Road
Best of Venue: 3:30pm Sunday, July 28



THE ARTIST: INSPIRED

CRESCENDO CONSERVATORY

FRI 19	SAT 20	SUN 21	WED 24	SAT 27
8:00	2:00	6:30	6:30	6:30

Crescendo Conservatory returns to KC Fringe with *The Artist: Inspired*. This year's production brings dynamic dance, soulful beauty and youthful zeal to its audiences! Crescendo in Motion's talented young artists, ages 11-18, present an invigorating program of classical ballet, jazz and contemporary choreography appealing to all ages! Join Crescendo in Motion for an engaging performance that is sure to leave *The Audience: Inspired!*

CRESCENDOCONSERVATORY.COM • DANCE • RATED G



THE CHAPTERS OF SEEKING

MOMENTUM, TRUTH, IN TIME, & 4 LOVE

TRISTIAN GRIFFIN

SAT 20	SUN 21	TUE 23	FRI 26	SAT 27
8:00	2:00	6:30	9:30	5:00

The Chapters of Seeking features a narrative illustrated through contemporary movement, text and original music. The four sections, *Momentum, Truth, Love* and *In Time* illustrate the essence of momentum, truth, love and time. A different world emerges, section by section, as the performers transpire in a journey through each of these elements, connecting them to one another and to themselves.

TRISTIANGRIFFIN.WIXSITE.COM/TRISTIAN • DANCE • RATED G



FOR WHOM THE COMEDY PANDERS

JOHN DWYER

FRI 19	SAT 20	TUE 23	FRI 26	SAT 27
9:30	6:30	8:00	6:30	9:30

Fresh from NYC, choreographer John Dwyer explores the universality and personal nature of humor through a nonsensical evening of dance, diaries, creative movement, and physical comedy. Smirk along with John for 45 minutes, and let your inhibitions fly as the mundane gets transformed in this observational dance comedy. "Do not ask for whom the comedy panders; it panders for thee."

DANCE • RATED G



THE GREATEST-ER SHOW AT FRINGE

KANSAS CITY AERIAL ARTS AND VIDADANCE

SAT 20	SUN 21	WED 24	THU 25	SAT 27
5:00	3:30	8:00	6:30	8:00

After last year's overwhelming success with *The Greatest Show at Fringe*, Kansas City Aerial Arts and VidaDance Company join forces yet again. Some familiar rope-slinging and tap-dancing faces will be joined by completely new acts, including a dangerously sharp pasodoble, a blindfolded trapeze piece, and an acrobatic opening number. This modern homage to traditional circus will leave the audience awestruck and wanting more.

KANSASCITYAERIALARTS.COM, VIDADANCECOMPANY.COM • DANCE • RATED G



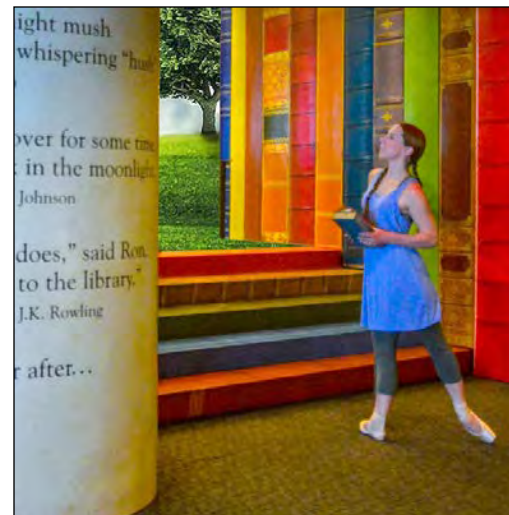
LIFE OF AN EMPATH

BEAUTIFUL BUTTERFLIES

SAT 20	SUN 21	MON 22	FRI 26	SAT 27
9:30	5:00	8:00	8:00	3:30

Life of an Empath is a journey of an individual that learns to grow into his empathic abilities. It starts with the golden rule mentality, but leads through betrayal and heartbreak. Like a Phoenix rising above, the Empath rises from his darkness into the shining star of light. Through passionate interpretive dancing, we see the growth and struggles of an artistic soul trying to make the world a better place. A representation of unconditional love and kindness that leaves a sense of a warm heart.

DANCE • RATED PG



TURNING THE PAGE

VIDADANCE COMPANY

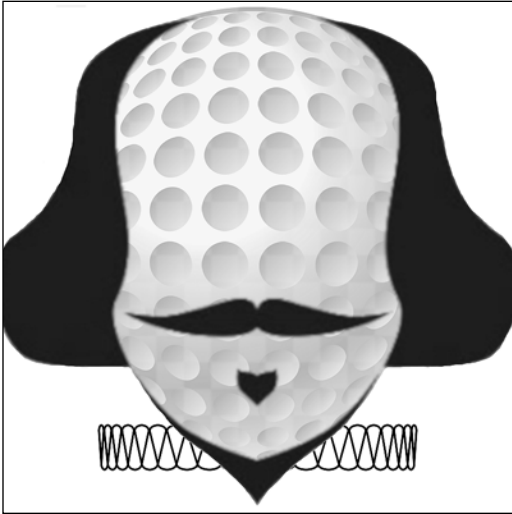
FRI 19	SAT 20	MON 22	THU 25	SAT 27
6:30	3:30	6:30	8:00	2:00

Turning the Page depicts the story of a lonely young girl, Ricki, who after being tormented by bullies escapes for solace in the public library. She finds herself in a world where books come to life and lead her through a series of precarious adventures! In the end, Ricki must gather her courage and stand up to her tormentors using the knowledge she has gained on her journey. Each show we will collect donations (school supplies, clothing, etc.) for Cornerstones of Care, a local foster care agency.

VIDADANCECOMPANY.COM • DANCE • RATED G

THE BUFFALO ROOM

817 Westport Road behind Westport Flea Market
Best of Venue: 2:00pm Sunday, July 28



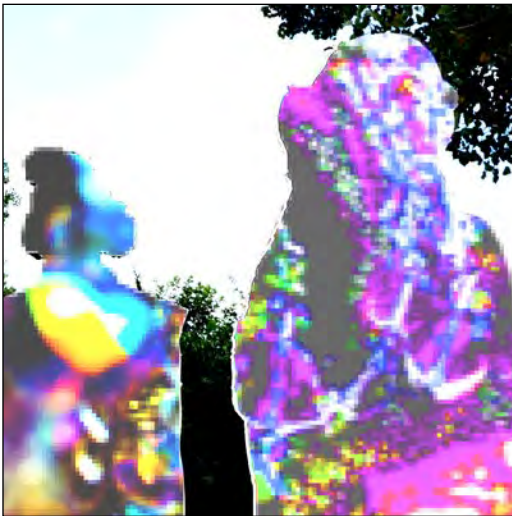
CADDY SHAKES

FAIRBANKS SHAKESPEARE THEATRE (FAIRBANKS, AK)

SAT 20	SUN 21	TUE 23	FRI 26	SAT 27
4:00	6:00	6:00	8:00	10:00

Three Alaskans tackle 19 characters in this Shakespearean reimagination of the 1980 comedy classic *Caddyshack*. Join Dardanius, Lavinia Bottom, and asst. greenskeeper, Carliolanus, as the putt-putt makes putzes out of them all. Gophers, Kenny Loggins, and a floating Baby Ruth help motivate these dukes, dorks, and damsels as they duff, hook, and slice their way through Shakespeare's couplets. Fore!

FAIRBANKSSHAKESPEARE.ORG • THEATRE • RATED PG



COLLIDSCOPE

COLLIDSCOPE

SAT 20	SUN 21	MON 22	FRI 26	SAT 27
6:00	2:00	8:00	6:00	8:00

From their first form as stewards of downtempo "soulgaze" music, Collidescope has since quickened its tempo and evolved from a duo to a 4-piece. Soaring vocal melodies and stylings blending elements of soul, pop and the occasional growl steeped in eclectic production, driving guitars, smooth bass and punching drums; you are better off experiencing a live performance than attempting to place the brainchild of Madi and Hadiza into specified genre boxes.

ACOLLIDSCOPE.BANDCAMP.COM • MUSIC • RATED G



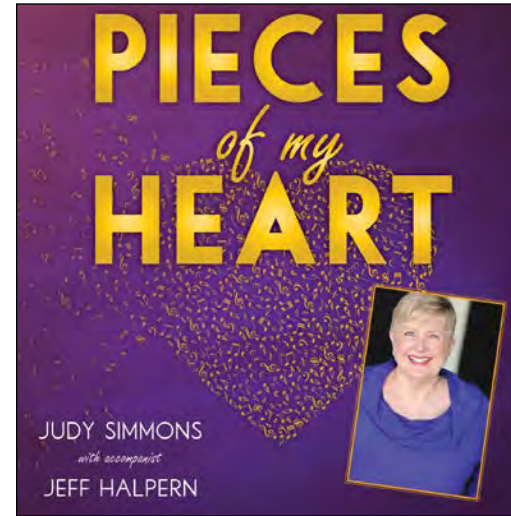
THE GREEN KANVAZ EXPERIENCE

GREEN KANVAZ

FRI 19	SAT 20	TUE 23	THU 25	FRI 26
6:00	8:00	8:00	6:00	10:00

Green Kanvaz is a local Hip hop/ Pop musician. Performing with other local artists such as Jaii Ache and Latrae J featured in their first grand performance!

MUSIC • RATED G



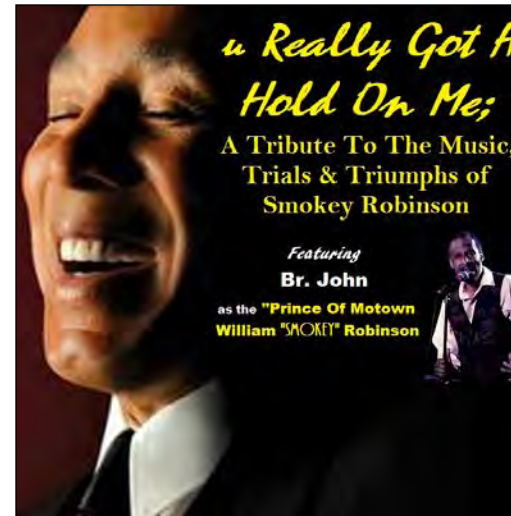
PIECES OF MY HEART

JUDY SIMMONS

FRI 19	SAT 20	MON 22	WED 24	SAT 27
8:00	10:00	6:00	8:00	4:00

"Music has always defined my life. And I have fallen in love with so many wonderful songs." Join in the fun of a delightful summer celebration of music and lyrics filled with humor, joy, and sorrow — a very special musical journey with local favorite Judy Simmons and accompanist Jeff Halpern. Judy has appeared in shows at Starlight, KCRep, Quality Hill, The Chestnut, MTH, Spinning Tree, and Coterie. She enjoyed a long career performing in Washington, DC Theatres and Cabarets before KC.

MUSIC • RATED G



U REALLY GOT A HOLD ON ME

A TRIBUTE TO THE MUSIC, TRIALS & TRIUMPHS OF SMOKEY ROBINSON

BR. JOHN

FRI 19	SUN 21	WED 24	THU 25	SAT 27
10:00	4:00	6:00	8:00	6:00

A live concert experience of the true life account of William "Smokey" Robinson Jr.'s journey from his humble days as an ambitious teen songwriter in Detroit, to founder of the famed singing group The Miracles, to VP of Motown Records. "Best Of Fringe" winner Br. John plays Smokey as he bares his soul from topics on marriage, infidelity, and drug abuse. Discover how he received a new lease on life and his secret to success.

BRJOHNRAJPA.COM • MUSIC • RATED PG

BEST OF FRINGE

Want to see the most popular shows at Fringe?

On Sunday, July 28, you can see all the best attended shows at each venue. Check kcfringe.org Sunday morning to see which shows are the "Best of Fringe."

The Best of Fringe schedule is on page 47

CENTER FOR SPIRITUAL LIVING



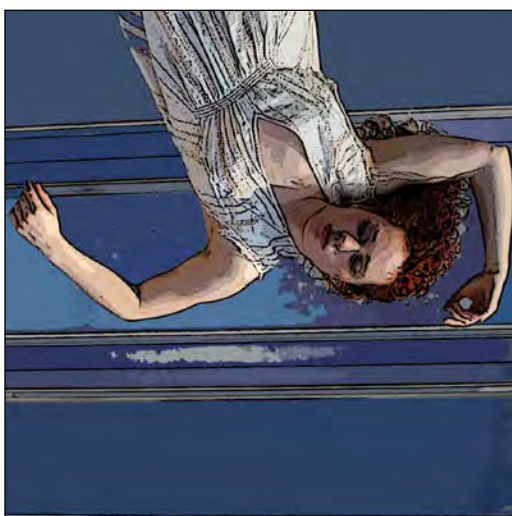
EMILY THE MUSICAL

ISABELLA PICHARDO

SAT 20	SUN 21	TUE 23	FRI 26	SAT 27
4:30	3:00	7:30	9:00	6:00

Emily the Musical explores the mysterious early life of poet Emily Dickinson before her seclusion. Through heartbreaking losses and influential people, inspiration for her groundbreaking poetry is found. Scenes and songs are infused with direct excerpts from the writings of Dickinson, giving the viewer a peek directly into her mind. Written by Isabella Pichardo with material by Daniel Verschelden.

THEATRE • RATED PG



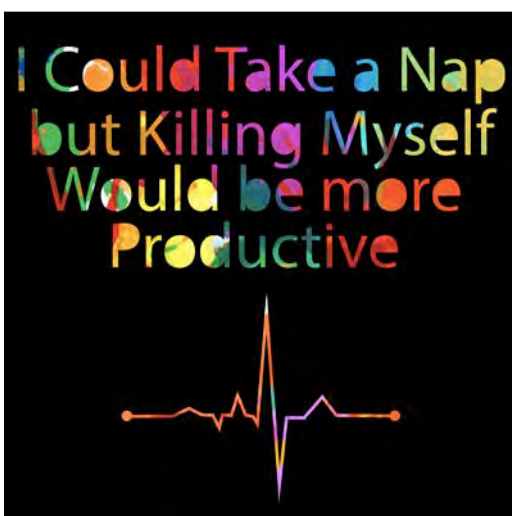
EXPECTATION

SARAH FRANGENBERG (WICHITA, KS)

SAT 20	SUN 21	WED 24	THU 25	SAT 27
9:00	7:30	6:00	7:30	4:30

What do you expect of yourself, of others, for your career, your life? Will you meet these expectations? Will you fail? What do others expect of you? Do you fear not meeting theirs? These are the questions Sarah Frangenberg will explore in her one woman show *Expectation*. Through movement and words, she will dive deeply into the research, inviting others along for the journey. Through much falling, she learns there is only one whose expectations she desires to meet. But whose?

SARAHFRANGENBERG.COM • DANCE • RATED PG



I COULD TAKE A NAP

BUT KILLING MYSELF WOULD BE MORE PRODUCTIVE

CLOUD 9 PRODUCTIONS (LOS ANGELES, CA)

SAT 20	MON 22	WED 24	THU 25	SAT 27
3:00	6:00	7:30	6:00	7:30

This piece breaks open the events resulting in the suicide of an 18-year-old high achiever. The stage becomes a life-size version of her journal as she processes the pressures and stresses of her daily life. Combining an original music score, live theater, movement, and home videos, actors from the California Institute of the Arts provide an insight into the tumultuous lives of 21st century adolescence.

CLOUD9PRODUCTIONS.WIXSITE.COM/CLOUD9 • THEATRE • RATED PG

1014 West 39th Street
Best of Venue: 5:00pm Sunday, July 28



MAN CAVE

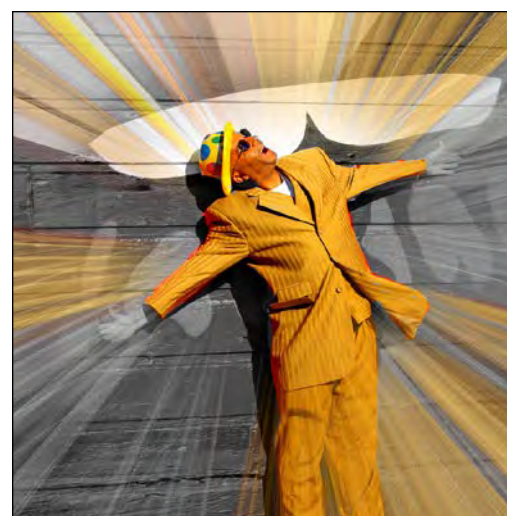
A ONE-MAN SCI-FI CLIMATE CHANGE TRAGICOMEDY!

TIMOTHY MOONEY REPERTORY THEATRE (BUFFALO GROVE, IL)

SAT 20	SUN 21	MON 22	FRI 26	SAT 27
6:00	4:30	7:30	7:30	9:00

Hanging on by a thread, at the tail end of climate change, the last man on earth broadcasts a warning to whatever Klingons, Vulcans, or Tralfamadarians might still be out there listening! And so, the world ends: with neither bang, nor whimper, but a few final last-minute jokes on us. "Al Gore replaced by William H. Macy, with a lot more swagger and humor than the former vice president could ever manage!" (*Orlando Sentinel*)

TIMMOONEYREP.COM • THEATRE • RATED PG



OUT OF THE DARKNESS

MALCOLM GRISSOM

THIS EVENT HAS BEEN CANCELLED



JUST OFF BROADWAY



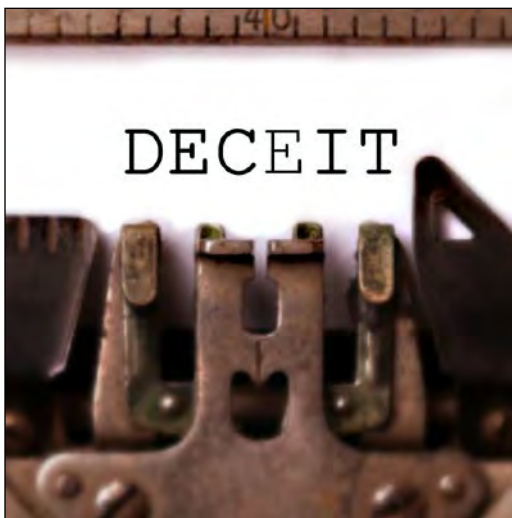
ACCIDENTAL POINTS OF VIEW

POTLUCK PRODUCTIONS

FRI 19	SAT 20	TUE 23	THU 25	SAT 27
6:30	8:00	6:30	8:00	7:30

Three little plays about lies, larceny, and magic. The playwrights are Glendora Davis, Mary Beth Gordon, and Lezlie Reville Zucker. Directed by Diane Bulan. The actors are Glendora Davis, Meghann Deveroux, Tracy Fox, Larry Goodman, Zach Lofland, Sarah Nickerson, Jill Nienhiser, Addison Parker, Dane C. Petersen, Erika Crane Ricketts, and Amy Irene Stock.

POTLUCKPRODUCTIONSCK.COM • THEATRE • RATED G



DECEIT

RELEVANCE PRODUCTIONS

SAT 20	SUN 21	TUE 23	THU 25	SAT 27
6:30	3:00	8:00	9:30	1:30

Russ is still riding the success of his first best-seller, *Lament*. Tragedy strikes, blocking his creative flow and drive until he meets Clare. From their soulful connection and love, they find strength and inspiration while others pressure him for his next big hit. Before Russ can share a new story he must find the disparity between truth, lies, and perception. From the playwright behind past hits *Revelations*, *The Islander*, and *Lookin' for a Fight*. Starring Fringe favorite Scott Cox.

THEATRE • RATED PG



THE KITCHEN PLAYS

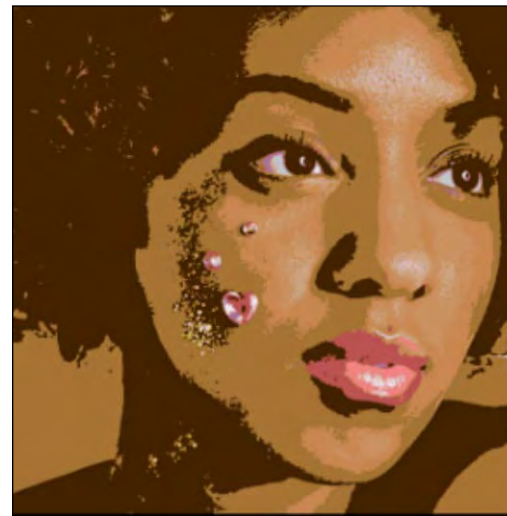
LEZLIE REVELLE ZUCKER

SAT 20	SUN 21	WED 24	FRI 26	SAT 27
9:30	1:30	8:00	6:30	4:30

The kitchen is the center of the home. It's the heart and hearth, where recipes and people come together, and where families gather to remember who they were and figure out who they are. *The Kitchen Plays* are a window into the big things that happen over small moments in the kitchen. Directed by Lindsay Adams. Starring Meghann Devereaux, Larry Goodman, Peter Leonededis, Kelly Main, Dajjah Porcee, Margaret Shelby, and Shelley Wyche.

LRZCREATIVE.COM • THEATRE • RATED G

3051 Penn Valley Drive (accessible from Broadway or Central)
Best of Venue: 3:30pm Sunday, July 28



LET ME EXPLAIN MY BLACKNESS

ADDRESSING BLACK WOMEN'S
THOUGHTS THROUGH COMEDY

YASKWEEN PRODUCTIONS


FRI 19	SAT 20	MON 22	THU 25	SAT 27
8:00	3:00	6:30	6:30	9:00

Are you curious about black girl magic? Then sit still, soak this in and simply enjoy. Being a woman is exhausting! Yet, being a black woman is a mix of magic, mystery for many, and confusion for most. This piece of work is filled with various comedy sketches about black women's growth thru pain and humor. So relax and laugh with us. #BlackGirlMagic

THEATRE • RATED PG

JUST OFF BROADWAY CONTINUED ON NEXT PAGE

PIECES *of my* HEART



JUDY SIMMONS
with accompanist
JEFF HALPERN

Join Cabaret artist Judy Simmons for an evening of intimate musical journeys. In a career that spans stages from Washington, D.C. to Kansas City, Judy is renowned for her fresh and honest interpretation of the American Songbook.

Along with accompanist Jeff Halpern, Judy celebrates the humor, joy and sorrow in songs both familiar and rarely heard, from composers such as Stephen Sondheim, Leonard Bernstein, Amanda McBroom, Jeff Blumenkrantz and more.

THE BUFFALO ROOM
817 WESTPORT ROAD, KCMO

\$10 WITH A ONE-TIME PURCHASE OF A FRINGE FESTIVAL BUTTON FOR \$5

FRIDAY 7/19 AT 8 PM
SATURDAY 7/20 AT 10 PM
MONDAY 7/22 AT 6 PM
WEDNESDAY 7/24 AT 8 PM
SATURDAY 7/27 AT 4 PM

JUST OFF BROADWAY CONTINUED



MARILYN LYNCH

Yeti And Me!

Written by
Steve Searcy

What happens in the forest...
Stays in the forest!

Loretto Commons



LOOK WHAT THE FIRE DID

LEWIS MORROW

SAT 20	SUN 21	WED 24	FRI 26	SAT 27
1:30	6:30	6:30	8:00	3:00

David designed a course to empower young black minds. However, after the death of one of his students — killed on campus during an altercation with police — he can't help but wonder if he empowered his students in the wrong way. Unable to make sense of yet another tragedy, David and his family discuss the situation, trying to understand their own feelings when the student's character is attacked for past mistakes. Who will defend the student now that he's gone? David will. By any means.

THEATRE • RATED R

LOCAL FILM WORKS

MELTINGPOT FILMS/NEW DIGITAL PATHWAYS/BABY E FILMS/LAMAL MACK STUDIOS

SUN 21	MON 22	TUE 23	WED 24	SAT 27
4:30	9:30	9:30	9:30	10:30

Local film works by...

Denny Dey/New Digital Pathways: *Urban Legends, Presence, Edit, and Images*

Jesse Mack/LaMal Mack Studios: *The Interrogation*

Harvey William/MeltingPot Films: *Old School*

Stinson McLendon/Baby E Films

NEWDIGITALPATHWAYS.BLOGSPOT.COM • FILM • RATED R



YOU GET WHAT YOU NEED

PHIL KINEN'S BIG SHOW PRODUCTIONS

FRI 19	SAT 20	MON 22	FRI 26	SAT 27
9:30	4:30	8:00	9:30	6:00

This non-actual, not-so-factual rollercoaster account centers on counter-culture rock star MICK JAGGER deceiving the conservative London Bach Choir into meeting at the Olympic Recording Studios in London on November 17, 1968. Tensions mount as the two factions clash over their divisive, volatile views of the turbulent '60s. Through their shared love of music, they ultimately overcome their philosophical differences and create THE ROLLING STONES classic "You Can't Always Get What You Want."

THEATRE • RATED PG



LORETTO AUDITORIUM

1111 West 39th Street
Best of Venue: 5:00pm Sunday, July 28



BANG

DAN BORN (LAWRENCE, KS)

SAT 20	SUN 21	TUE 23	FRI 26	SAT 27
6:00	4:30	6:00	9:00	7:30

Bang is the story Joan Vollmer, known to history, if at all, as the woman shot by William Burroughs. In this one-woman show, written by Dan Born and originally staged by KC Public Theatre, she finally emerges from the shadows. She recounts the events of her life, from her pivotal role in the foundation of the Beats to farming weed in Texas, to fleeing one step ahead of the law to Mexico City and the last fateful chapter.

THEATRE • RATED PG



ENLARGED TO SHOW TEXTURE

PLAN B PRODUCTIONS

FRI 19	SAT 20	MON 22	THU 25	SAT 27
9:00	4:30	7:30	7:30	6:00

Typhane and Dysmenorrhea are childhood pals who once shared secrets, dreams, and McNuggets, before their lives took decidedly different paths. Now they share the stage seeking common ground between bubblegum and black metal. Can their friendship survive adulthood? Find out in this new comedy from Bryan Colley and Tara Varney, the producers of *The Man in My Beard* and the creators of past Fringe favorites *Red Death*, *Voyage to Voyager*, and *Variations on a Theme*. Starring Megan Steadman and Tara Varney.

JUPITERKANSAS.COM • THEATRE • RATED R

5 PLAYS

THE KC IMPROV COMPANY

FRI 19	SAT 20	MON 22	WED 24	FRI 26
6:00	9:00	6:00	6:00	7:30

Witness the opening and closing night of *5 Plays*. The audience provides the title of a play that's never been written. The cast provides a world of the deepest of pathos, the grandest of stakes, and the most dramatic of drama. You'll laugh. You'll cry. You'll question the very world around you. All made up by The KC Improv Company (Best Improv/Sketch Group, *The Pitch*).

KCIMPROV.COM • COMEDY • RATED R



MAGIC IS NOT PRETTY

AN EVENING OF KEEPING SECRETS

C.K. CAREY

FRI 19	SUN 21	WED 24	THU 25	SAT 27
7:30	6:00	7:30	6:00	9:00

Magic's secrets are not what you think. C.K. Carey wants to peel back the curtain and reveal a brief history of mystery itself. His 2018 KC Fringe Festival "Best of Venue" show, *Powers of Darkness*, was a smash hit! Luke Dodge's official review proclaimed "...Carey is a master storyteller" and added, "I still can't help but feel I witnessed the impossible." After seeing an impromptu performance of Carey's during the festival, Billy Bob Thornton exclaimed, "You're a witch!"

WWW.MAGICIAN.PAGE • VARIETY • RATED PG



AN OLD TROUBADOUR & HIS GUITAR

JIM COGSWELL

SAT 20	SUN 21	TUE 23	FRI 26	SAT 27
7:30	3:00	7:30	6:00	4:30

An old and recently retired guy looks back on life and says; "I wish I'd just played the music that I love." First-time Fringe performer Jim Cogswell steps out of his comfort zone, playing and singing some of the songs that have colored his past and will brighten the future. Join him for some songs that you may know and a few that may be new to you.

MUSIC • RATED G

LATE NITE

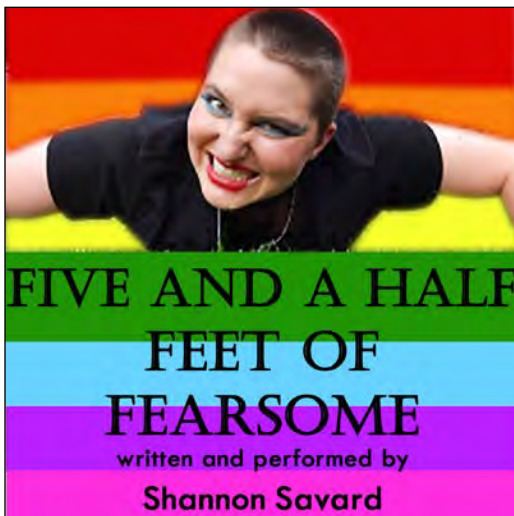
Stay up late with Fringe at Union Station's Haverty Family Yards

Bring a chair or blanket and hang out with Fringe artists, volunteers, and festival-goers. Enjoy live music, cold adult beverages, and food trucks. Donations appreciated.

10:00pm-Midnight every Friday and Saturday during Fringe

LORETTO CHAPEL

1111 West 39th Street
Best of Venue: 2:00pm Sunday, July 28



FIVE AND A HALF FEET OF FEARSOME

SHANNON SAVARD (COLUMBUS, OH)

SAT 20	SUN 21	TUE 23	FRI 22	SAT 27
6:30	3:30	8:00	6:30	5:00

Part militaristic recruitment meeting, part puppet show, part physical theatre, part confessional, and part stand-up comedy. Much like the trans community, *Five and a Half Feet of Fearsome* doesn't fit neatly into one box. Genderqueer artist Shannon Savard invites you to accompany them in their mission to take on mainstream media's anxieties surrounding transgender people, doctors, Judy Blume, and Bertha the Furious Uterus.

SHANNON8415.WIXSITE.COM/NICOLASSHANNONSAVARD • THEATRE • RATED PG



LILLY

LILLY

FRI 19	SAT 20	MON 22	WED 24	SAT 27
6:30	2:00	9:30	8:00	9:30

Lilly is a Kansas City band that merges elements of shoegaze and ambient with Baroque to create their own unique songs. The project began with the songs being written as ambient instrumentals. *Lilly* is a project that transforms these songs, originally written for relaxation and calming, and giving them a compelling new life with lyrics and a three-piece band. Lilly is singer Lizzi Leigh and musicians Justin Story and John Hatch. Background visuals will add beauty to the music.

MUSIC • RATED G



LOUDER THAN A SOUND BY KC2

KC2

THIS EVENT HAS BEEN CANCELLED



MUSICAL GEOGRAPHY

AN EXPLORATION OF HISTORIC INSTRUMENTS FROM THE SILK ROAD

CHRIS STEPHENS: WORLD MUSICIAN (COLUMBIA, MO)

FRI 19	SAT 20	SUN 21	THU 25	SAT 27
9:30	9:30	2:00	9:30	2:00

American virtuoso musician Chris Stephens gives a solo concert featuring five different traditional musical instruments from Turkey, Egypt, Iran, India, and China — exploring the unique style of music from each region.

CHRISSTEPHENSWORLDMUSIC.COM • MUSIC • RATED G



PIRATES IN CORSETS, OR PMS PINAFORE

PIRATES ARRGH US (LITTLETON, COLORADO)

SAT 20	SUN 21	MON 22	FRI 26	SAT 27
8:00	6:30	8:00	8:00	3:30

PMS Pinafore is a two-act musical chronicling the adventures of a bawdy band of women pirates. Two male pirates infiltrate the women's ship to discover the secrets to their success. They end up getting more than they bargained for. (So do the women!) Lynn Grasberg, writer and composer, plays all the roles in this one-woman version of the full cast show. Come see a show jam-packed with comedy of errors, role reversal, and mistaken identity in the service of gender justice.

THEHUMORACTIVATOR.COM • THEATRE • RATED R

FRINGE TEASERS

Not sure what to see at Fringe?

With 80 shows to choose from, it can be tough to decide what to go see. That's why we have two nights of teasers where Fringe artists give you two minute samples of their shows.

7pm Tuesday and Wednesday, July 16 & 17 at the Union Station Extreme Screen

LORETTO COMMONS

1111 West 39th Street
Best of Venue: 3:30pm Sunday, July 28



I PROUD MARY

SUZETTE WOODS

FRI 19	SAT 20	MON 22	THU 25	SAT 27
9:00	4:30	7:30	7:30	6:00

I Proud Mary is a 55-minute tribute show of one of Suzette's favorite rock & roll bands of the 70's that is full of style and energy: The Ike & Tina Turner Revue. Suzette will deliver some of the greatest hits such as *Fool In Love*, *Nutbush City Limits*, *Proud Mary*, and later hits like *What's Love Got To Do With It*, *Private Dancer*, and so on. Come listen and learn about one of America's greatest Icon of all times. Ms Tina Turner is simply the best.

MUSIC • RATED R



kNew

POET TL SANDERS

FRI 19	SUN 21	WED 24	THU 25	SAT 27
7:30	6:00	7:30	6:00	9:00

During this multi-character solo show, Poet T.L. Sanders will transport you on a lyrical journey like you've never experienced. In this performance of his forthcoming hybrid screenplay, *kNew*, published by Flying Ketchup Press (Summer 2019), Sanders shares an original story of one September open mic night at the Blue Room on 18th and Vine. It's a night where a grown son mourns his prodigal father and something new emerges in the hearts of those willing to speak their truth.

THEATRE • RATED PG



PUERTO RICAN AMERICAN GOTHIC

EMMY RIVERA

SAT 20	SUN 21	TUE 23	FRI 26	SAT 27
6:00	4:30	6:00	9:00	7:30

Comedian Emmy Rivera brings us the story of what happens when a Puerto Rican Jersey girl moves from the outskirts of NYC to the Midwest college town of Lawrence, Kansas. She shares the unexpected struggles she faces while attempting to become the perfect grandmother she fantasizes of becoming despite the debauchery her long buried inner party girl gets into during her freshman year in a new land. Delightfully told with heart wrenching moments and lots of laughs.

FACEBOOK.COM/EMMYRIVERACOMEDY • COMEDY • RATED R



WHAT A WOMAN WANTS

JAMIE MAYO

FRI 19	SAT 20	MON 22	WED 24	FRI 26
6:00	9:00	6:00	6:00	7:30

Landing a starring role in a fairy tale hardly ever worked out well for a woman. Especially a woman who dared hope for more than a woman should. On the other side of the kingdom, King Arthur finds himself in danger of losing his head unless he can answer one question: "What does a woman most desire?" An answer she knows. With one shot at breaking her curse and becoming human again, this loathly lady has little hope. Can she work her own magic and save them both?

THEATRE • RATED PG



Yeti And Me

What happens in the forest...
Stays in the forest!

YETI AND ME!

GOOD FRIENDS PRODUCTIONS

SAT 20	SUN 21	TUE 23	FRI 26	SAT 27
7:30	3:00	7:30	6:00	4:30

Featuring Marlyn Lynch. In her search for Big Foot and her missing husband, Freddy, Betty devises a plan to hold a giant "Zoom Meeting" in the forest. In this way, she will have countless witnesses when Bigfoot appears. Hoping to grab the attention of the curious creatures, she calls to them in their native tongue and sings them songs. Yes, they're there, just beyond our sight lines. Can Betty lure them in? Is Freddy part of their tribe now? Regardless... what happens in the forest stays in the forest.

YETIANDME.COM • THEATRE • RATED G

FRIENDS OF FRINGE

Join Friends of Fringe today and help support this incredible festival

For as little as \$25 you can join Friends of Fringe and get special recognition, tickets, and merchandise. We wouldn't be celebrating our fifteenth anniversary without your support.

See page 7 for Friends of Fringe perks and how to donate

METROPOLITAN ENSEMBLE THEATRE

3927 Main Street
Best of Venue: 5:00pm Sunday, July 28



BONES BENEATH THE SIDEWALK

COLLEEN ENNA

FRI 19	SAT 20	SUN 21	WED 24	SAT 27
6:30	9:30	6:30	6:30	2:00

Bleeding Kansas versus Bloody Missouri. Tales of John Brown, Bloody Bill Anderson, plus a former Missouri governor leading Confederates into the Battle of Westport are all described by a grandfather to his grandchild. Kansas and Missouri choruses pipe in — no love lost here. There are bones beneath the sidewalks in Kansas City, according to J.C. Nichols. Civil War soldiers bones that we walk over today.

THEATRE • RATED G



DREAMS DO COME TRUE

KENT RADER

SAT 20	SUN 21	TUE 23	FRI 26	SAT 27
5:00	3:30	6:30	9:30	8:00

Kent Rader's one-man (CLEAN) comedy show *Dreams Do Come True* answers the age old question, "How does one go from accounting to comedy?" (Kent says it is easy if you're a bad accountant.) On his 20th anniversary of doing clean stand-up comedy, Kent reflects on how he unexpectedly became less selfish transitioning from malcontent accountant to (less malcontent) comedian. This show takes you on a journey you won't want to end.

KENTRADERSPEAKS.COM • COMEDY • RATED G



FINAL CURTAIN

DELTA HEART PRODUCTIONS

FRI 19	SAT 20	MON 22	THU 25	SAT 27
9:30	3:30	8:00	8:00	6:30

From the team that brought you *Bird in the Hand*, *Audience*, and *Check Mate* comes next-level immersive theater. Once famous ghost hunters come to this twice cursed theater to capture paranormal activity but all is not as it seems. Three plays happen simultaneously & interact to weave a story of redemption, love, and discovery on the journey to the Final Curtain. In each performance, up to four audience members will become full cast members in this ghost story — come early if you wish to be considered.

FACEBOOK.COM/FINALCURTAINKC • THEATRE • RATED PG



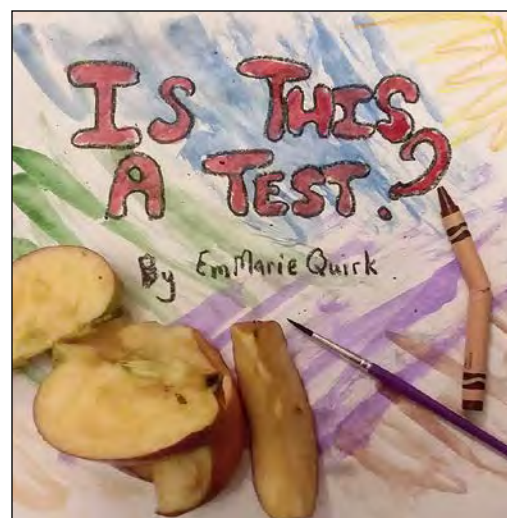
IN JUST MY UNDERWEAR

TONY SLOAN

FRI 19	SAT 20	WED 24	THU 25	SAT 27
8:00	2:00	8:00	6:30	9:30

The human body is an amazing thing. However, sometimes we don't always view it as such. Follow theatre artist Tony Sloan as he discusses body image, diet, exercise culture, and confidence through the scope of his own 100+ pound weight loss during this one-man exhibition. Oh... and by the way, he isn't wearing any pants.

TONYSLOANACTOR.COM • THEATRE • RATED PG



IS THIS A TEST?

EMMARIE QUIRK

SAT 20	SUN 21	TUE 23	FRI 26	SAT 27
6:30	2:00	8:00	6:30	5:00

How does a lifetime of teaching affect you? Meeting thousands of students as they grow and change, seeing their needs go stunningly unmet. Whence cometh the calm, the patience for each life you meet? Can frustrations crush you? Can sheer exhilaration lift you beyond the reach of gravity and oxygen? Facing the ignorance of decision makers, unconcerned, misunderstanding learning beings, can this impel you to the brink of mayhem? *Is This a Test?* features Judy Graves and EmMarie Quirk.

THEATRE • RATED R



MUTNIK

BC THEATRICALS (ORLANDO, FL)

SAT 20	SUN 21	MON 22	FRI 26	SAT 27
8:00	5:00	6:30	8:00	3:30

In 1957, Soviet scientists sent the first living thing into space — a stray dog. MUTNIK is a "one dog play" that draws from historical events to create a story of purpose, life, and death all told by a Russian pup. Winner of Best Solo (Drama), Orlando Fringe 2018. "This story of courage in the face of adversity tugs at the heartstrings. Good dog." *Orlando Sentinel*. There are many dogs in the Orlando Fringe game this year, but this good boy may just be best in show." *Watermark Magazine*

BCTHEATRICALS.COM • THEATRE • RATED R

UNICORN LEVIN STAGE

3828 Main Street
Best of Venue: 2:00pm Sunday, July 28



CAITLIN COOK: DEATH WISH

CAITLIN COOK (BROOKLYN, NY)

FRI 19	SAT 20	SUN 21	MON 22	TUE 23
7:30	3:00	6:00	7:30	6:00

Since she was 17, Caitlin Cook has lived by a code: if something scares her, she has to do it. Join this LA-born, NYC-based, Oxford-educated, hyphen-addicted raconteur for a raucous hour of comedy, music, and bathroom graffiti to find out why. Not your conventional stand-up; Cook combines witty one-liners and scintillating storytelling with hilariously irreverent musical comedy and projected visuals. She has performed at top-tier venues, comedy clubs, and festivals all around the world.

THECAITLINCOOK.COM • COMEDY • RATED R



HOPE HELP LINE

LIZ KERLIN

SAT 20	SUN 21	WED 24	FRI 26	SAT 27
7:30	3:00	7:30	6:00	9:00

Dallas is hanging on by a thread in her job as a suicide hotline worker. When she gets a call from a long-time hotline veteran, things get out of control, and she is left wondering if anyone who struggles with suicidal thoughts ever truly gets better. *Hope Help Line* is a comedy of no laughing matter that shows the many faces of those who work for and use suicide prevention services, and how even when we're at our lowest, we're always capable of helping someone.

THEATRE • RATED R



JEANNETTE RANKIN

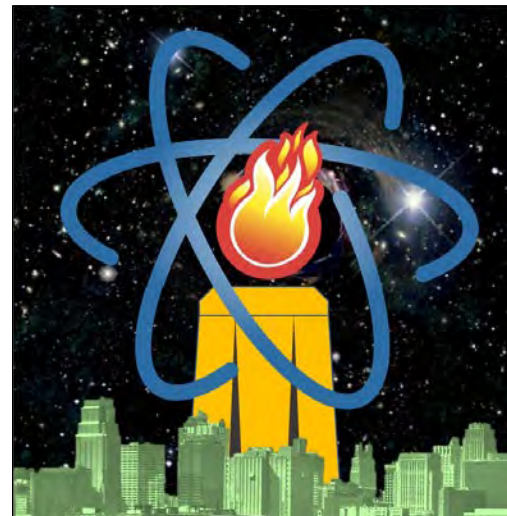
CHAMPION OF PERSISTENCE

THORN PRODUCTIONS (MINNEAPOLIS, MN)

FRI 19	SAT 20	MON 22	THU 25	SAT 27
9:00	4:30	6:00	7:30	6:00

With passion for reform, Jeannette Rankin was a thorn in the side of the establishment for 93 years of life. In 1916, she was the first woman elected to Congress from her home state of Montana. She served two nonsequential terms during which she voted against both world wars. With grace and humor she battled for women's suffrage, labor rights, and social justice. She was one of the first citizens to speak out against the Vietnam War. This is her story. Her triumphs and her despair.

WWW.THORNPRODUCTIONS.ORG • THEATRE • RATED PG



THE SCIENCE OF KANSAS CITY

TORTOISE SHELL PRODUCTIONS

(LAWRENCE, KS)

THIS EVENT HAS BEEN CANCELLED



SIDES OF HISTORY

SKULLDOG PRODUCTIONS

(WARRENSBURG, MO)

SAT 20	SUN 21	TUE 23	FRI 26	SAT 27
6:00	4:30	7:30	9:00	7:30

Allison Camden, a university professor, is struggling. She is trying to overcome the effect of recent personal events. An interaction with a student results in an accusation that turns her world upside-down. Can Allison stay standing as the world crashes? Is she who she thought she was? Will the world win? Or, is she strong enough to move forward?

THEATRE • RATED PG

CLOSING PARTY

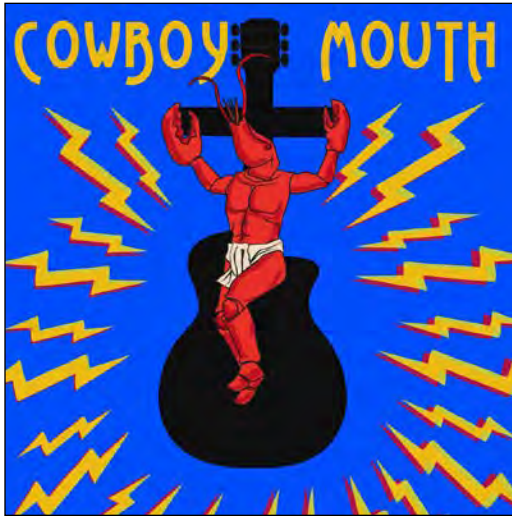
Fringe isn't over until we throw a big party

Come say goodbye to all the Fringe artists, volunteers, and fellow audience members at our Closing Night Party. Enjoy light food and drink and meet the people that make Fringe happen.

6-9pm Sunday, July 28 at the Union Station Haverty Family Yards

UNICORN JEROME STAGE

3828 Main Street
Best of Venue: 5:00pm Sunday, July 28



COWBOY MOUTH

BY SAM SHEPARD AND PATTI SMITH

THUD PRODUCTIONS

SAT 20	SUN 21	MON 22	FRI 26	SAT 27
8:00	5:00	8:00	8:00	3:30

Slim has been kidnapped off the streets, taken from his family and life, and is being held captive by the dangerous and coercive Cavale. The two fall in love as she begins to mold him into the rock'n'roll savior the world needs — "a saint with a cowboy mouth. Somebody to get off on when they can't get off on themselves." Starring Derek Trautwein and Deborah Madick, featuring Tommy Waller.

FACEBOOK.COM/THUDPRODUCTIONS • THEATRE • RATED R



THE SUMMER HOUSE

BY CHRISTIE KENNARD

RISING TIDE PRODUCTIONS

SAT 20	SUN 21	TUE 23	FRI 26	SAT 27
5:00	3:30	6:30	9:30	8:00

Kate Eastman is determined to make friends with her reclusive neighbors, Mrs. Woodson and Mrs. Howard, newly arrived in Nashville in 1881. Little does she know they are the wives of outlaws Frank and Jesse James. Complications arise when a Missouri gang member, Bill Ryan, shows up to lend the husbands a hand. Based on a true story. Directed by Bob Linebarger. Starring Casey Jane, Emmy Panzica, Stephanie Stevens, Margaret Shelby, Samn Wright, and Marek Burns. Costumes by Mary Traylor.

THEATRE • RATED G



DONATING SPERM TO MY SISTER'S WIFE

STEWART HUFF (ATHENS, GA)

FRI 19	SAT 20	WED 24	THU 25	SAT 27
8:00	2:00	8:00	6:30	9:30

In the style of Mark Twain with the bite of George Carlin, Stewart tells the hilarious story of *Donating Sperm to My Sister's Wife*. He actually did that. Then wrote this award-winning one-man comedy show. That really pisses off rednecks. Comedian and Kentucky Liberal Stewart Huff is a three-time Best Comedy Award Winner (Orlando Fringe) and winner of the Aspen Comedy Festival.

STEWARTHUFF.COM • COMEDY • RATED PG



T-MONEY IS CANCELLED

IMPACT PRODUCTIONS

FRI 19	SAT 20	SUN 21	WED 24	SAT 27
6:30	9:30	6:30	6:30	2:00

When a public figure's fame and fortune is threatened by the scorn of social media, it's up to his team to spin the pieces of this scandal into gold.....but should they?

THEATRE • RATED R



THE FAMILY CONTINUES

FLYOVER WORKS

FRI 19	SAT 20	MON 22	THU 25	SAT 27
9:30	3:30	6:30	8:00	6:30

In this off-the-wall trip to the 80s, Pulitzer Prize-winning playwright Landford Wilson brings you the life of Steve, who, thanks to a narrator only he can hear, learns that his life is passing him by. This hilariously dark ensemble piece reminds us of an important lesson: that, in the immortal words of Ferris Bueller, "life moves pretty fast. if you don't stop and look around once in a while, you could miss it."

THEATRE • RATED R



WITH ME, AND SUCH AS ME, IT IS DIFFERENT

AHAFIA JURKIEWICZ-MILES

SAT 20	SUN 21	TUE 23	FRI 26	SAT 27
6:30	2:00	8:00	6:30	5:00

Music is inherently queer, and queerness inherently musical. This one-person, one-piano show focuses on bringing music's long history of queerness and queer individuals to light. Through classical music and prose by both historical and contemporary LGBTQ artists, Jurkiewicz-Miles composes a love letter to the queer music community that demands recognition, with music by Tchaikovsky, Rzewski, and local composer Dominic Burkart.

MUSIC • RATED PG

UNION STATION CITY STAGE

30 West Pershing Road (on the lower theatre district level)
Best of Venue: 3:30pm Sunday, July 28



BIG TOP

DAVID GAINES (ARLINGTON, VA)

SAT 20	SUN 21	TUE 23	FRI 26	SAT 27
7:30	1:30	7:30	7:30	6:00

David Gaines, the five-star award winning performer of 7(x1) *Samurai*, returns with a tour-de-force of imagination and comic detail. A spectacular physical comedy full of danger, circus thrills, and a sweet romance. Fun for all ages. One performer on a bare stage, using only his body, imagination, and vocalizations. Wildly original. Like Popeye meets Chaplin meets Bugs Bunny! Fast-paced, ridiculous, poignant, and laugh-out-loud funny. If you grew up with cartoons, or never grew up at all, you'll love it!

DAVIDGAINESPERFORMANCE.COM • THEATRE • RATED G



FANTASMO VS. THE VAMPIRE WOMEN

RIGHT BETWEEN THE EARS

FRI 19	SAT 20	MON 22	THU 25	SAT 27
6:00	4:30	6:00	7:30	9:00

Fantasma vs. the Vampire Women is the latest audio theater adventure by Right Between the Ears. An evil coven of vampires is out to destroy the world...or possibly just Raytown. KC's own real-life masked avenger Fantasma battles the sexy bloodsuckers, plus lumbering robots with speech impediments, ravenous zombie hordes and mad scientists (are there any other kind in shows like this?). It's about the war between good and evil. It's about things that go bump in the night. It's about an hour.

WWW.RIGHTBETWEENTHEEARS.COM • COMEDY • RATED G



FLIGHTS OF FAERY FANCY

VOLER AERIAL ACADEMY

SAT 20	SUN 21	MON 22	FRI 26	SAT 27
9:00	4:30	7:30	6:00	3:00

The realm of your childhood favorites is the world where we showcase aerial drops, spins and feats of strength. Join Jack as he loses himself in the forest of the fairy amongst the likes of the Three Bears, Cinderella and the Fairy Godmother herself as we showcase the circus arts through the shenanigans of these otherworldly characters.

THIEVESOFFLIGHT.COM • THEATRE • RATED PG



MERCY

CAGKC

SAT 20	MON 22	WED 24	THU 25	SAT 27
6:00	9:00	7:30	6:00	7:30

Horror, drama. *Mercy* is a unique four-person dramatic horror piece that delves into society's fascination with true crime, mob justice, and the ramifications therein. Featuring an original score from local composer, Tim Harte. Directed by Katarina Fitzpatrick.

CAGKCC.COM • THEATRE • RATED R



THE SHIFT SHOW!

JADE OSBORNE

FRI 19	SUN 21	TUE 23	FRI 26	SAT 27
7:30	3:00	6:00	9:00	4:30

She's back with an all new immersive theatrical spectacle sure to tickle your curiosity. Imagine, a traveling medicine show in the air and on the ground, hosted by Kansas City's very own Jade Osborne. You are invited to be an active player in this onstage shifty experience. Get ready for a new perspective, ceremonial fun, real love potions & snake oil! This star performance will leave you exclaiming, "Wow...What a Shift Show!"

JADEOSBORNE.COM • THEATRE • RATED PG



SIX DEGREES OF DEFECATION

BRIE HENDERSON

FRI 19	SAT 20	SUN 21	WED 24	SAT 27
9:00	10:30	6:00	6:00	1:30

Just when you thought you were safe, Brie Henderson, The Poo Lady of Kansas City, is back with more tales of poop predicaments. What can she say? People love to share their stories of bathroom horror and she is willing to encourage them. After all, isn't everyone dealing with some sort of embarrassing secret they want to hide? Even if you have never pooped your pants (which is a lie), we hope this show makes you find humor in the gross, unpredictable, and completely human stories of fecal woe.

COMEDY • RATED PG

WESTPORT COFFEEHOUSE

4010 Pennsylvania
Best of Venue: 3:30pm Sunday, July 28



BENEATH THE BIKINI

BIKINI KATIE PRODUCTIONS (ORLANDO, FL)

FRI 19	SAT 20	SUN 21	WED 24	SAT 27
9:00	10:30	6:00	6:00	3:00

In 2013, Katie Thayer started a performance art piece called *Bikini Advertising Space*, in which she walks around in a bikini and sells ad space on her body. This is her story of growing up not-so-skinny, her love of food, and how she gained the confidence to do that. Winner of "Best Solo Show- Cabaret" (Orlando Fringe 2018), this "heartfelt cabaret" will inspire and entertain. Just don't show up hungry.

FACEBOOK.COM/BIKINIADVERTISINGSPACE • CABARET • RATED R



THE LIGHTWEIGHT

LIL THEATRE COMPANY (ORLANDO, FL)

FRI 19	SAT 20	MON 22	THU 25	SAT 27
6:00	4:30	6:00	7:30	10:30

Written by Willi Carlisle (2017's *There Ain't No More!*) and produced by the creators of *Clockstoppers* (2017) and *Lil Women: a rap musical* (2018). A spunky Tolkien fan confronts her inner demons (and the patriarchy) in this wacky, punch-drunk, nerdcore adventure. For those who got overlooked, who got left behind, and who were considered too old to begin the training! It's a story about how every day in life... is a fight.

WWW.LILTHEATRE.CO • THEATRE • RATED R



BIG GAY MAGIC SHOW!

TEAGAN BROWN (NEW YORK, NY)

THIS EVENT HAS BEEN CANCELLED



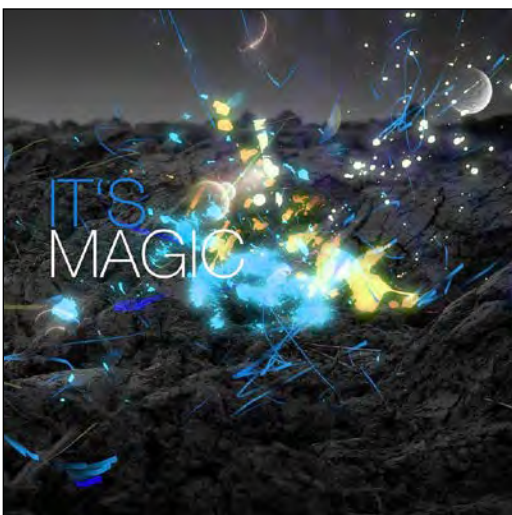
RED CLAY COUNTRY AND WHITE CLOVERINE SALVE

MIKE AND NANCEE MICHAM (TANEYVILLE, MO)

FRI 19	MON 22	WED 24	THU 25	SAT 27
7:30	9:00	7:30	6:00	9:00

As Dorothy Walker goes door-to-door selling salve to buy her first fiddle, we follow her life in Oklahoma then her decision to travel to California, playing her fiddle along the way in the migrant camps. This is a quilt with blocks from a life filled with grit and driven spirit in loving memory of an "Okie." A celebration of a dust bowl refugee interwoven with song, first person narrative, personal stories, and passages from *The Grapes of Wrath*.

FRONTDOORFARMMARKET.COM • THEATRE • RATED G



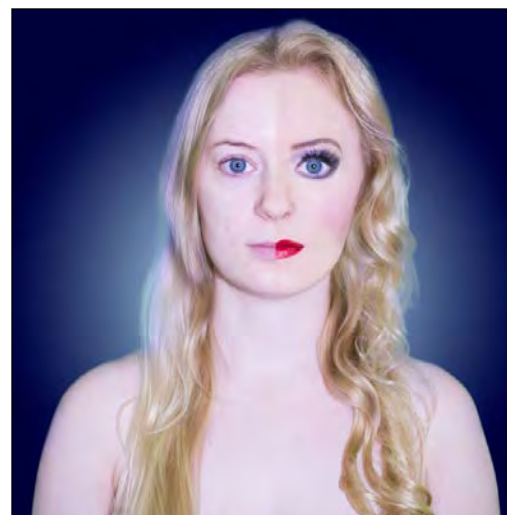
KC'S MAGIC SHOWCASE

SOCIETY OF AMERICAN MAGICIANS

SAT 20	SUN 21	TUE 23	FRI 26	SAT 27
6:00	3:00	6:00	9:00	6:00

Enjoy watching magic on *America's Got Talent*? How about on *Fool Us*? Come to the Fringe Festival and see magic up close and live, brought to you by KC's premier magic association. We are bringing together the finest magical talent in the Midwest for your entertainment. Kansas City's Magic Showcase will provide excitement, wonder, and mystery to this year's Fringe Festival.

VAREITY • RATED G



WAR PAINT

BORED AT MIDNIGHT PRODUCTIONS (ORLANDO, FL)

SAT 20	SUN 21	MON 22	FRI 26	SAT 27
9:00	4:30	7:30	7:30	4:30

International Fringe artist, Lily E. Garnett, is proud to announce the Midwest premiere of her debut solo piece. Combining autobiography with storytelling, she dons her "war paint" to explore self-image, social conditioning, beauty standards, and how society values people, particularly women. It's going to take her over an hour to get herself ready for this show... Except it's not. Directed by Rebekah Lane.

FACEBOOK.COM/WAR-PAINT-660887117647006 • THEATRE • RATED R

Service Printing and Graphics, Inc.

LOCAL AND FAMILY OWNED SINCE 1960 IN DOWNTOWN KC!

- **NEW** - Digital presses with larger sheet capacity
- **HEIDELBERG** - Four Color offset printing presses
- **LARGE FORMAT** - Posters, Signs and Banners
- **FULL BINDERY** - Perfect Binding, Coil, Saddle Stitch Binding and GBC Binding
- **FINISHING** - Laminating, Scoring, Perforating, Die Cutting, Foil Stamping and Embossing
- **MAILING SERVICES** - Every Door Direct, Non-profit, Standard and First Class Mailing Services
- **IN HOUSE CREATIVE DESIGN** and Prepress Services
- **SPECIALTY PRODUCTS** - Campaign Printing, Yard Signs, Pocket Folders, Tab Cutting, Corrugated Plastic Signs, Fulfillment Services, Numbered Event Tickets, Buttons, Invitations, Envelopes and Carbonless forms

**CALL OR EMAIL US FOR A
QUOTE TODAY!**

816-842-9068

orders@serviceprintingonline.com

design@serviceprintingonline.com

Web: serviceprintingonline.com

1146 Harrison Street • Kansas City, MO 64106
(Corner of 12th & Harrison)

**FREE
PARKING**



INDEX

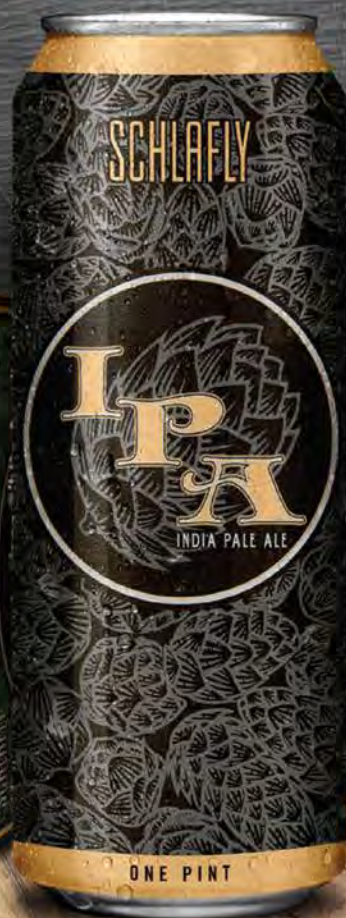
5 Plays	58	Gleesical	44	Phil Kinen's Big Show Productions	57
Accidental Points of View	54	Gloria Boehm	47	Pieces Of My Heart	51
Ahafia Jurkiewicz-Miles	69	Good Friends Productions	63	Pirates Arrgh Us	61
Alana Gwinner	19	Greatest-er Show at Fringe	49	Pirates in Corsets, or PMS Pinafore	61
Alexe J Savreux	25	Green Kanvaz Experience	50	Plan B Productions	58
And Jesus Wept	46	Hanging by the End of the Leash	44	Poet TL Sanders	62
Anna Goodwin	19	Help Me Help Her Me	46	Potluck Productions	54
Annie Kalahurka	46	Hope Help Line	66	Puerto Rican American Gothic	62
The Artist: Inspired	48	I Could Take a Nap, but Killing Myself Would be More Productive	53	Red Clay Country and White Cloverine Salve	73
Ashley Boettcher	16	Impact Productions	69	Relevance Productions	54
Baby E Films	57	In Just My Underwear	65	Right Between the Ears	70
Bang	58	I Proud Mary	62	Rising Tide Productions	69
BC Theatricals	65	Iron Artist	15	The Road Crew	25
Beautiful Butterflies	49	Isabella Pichardo	52	Rodrigo Alvarez	16
Beneath the Bikini	72	Is This a Test?	65	Roger Cissner	17
Big Gay Magic Show!	72	Isaac Tapia	28	Sandy Woodson	29
Big Top	70	Jade Osborne	71	Sara Engman-Slaughter	19
Bikini Katie Productions	72	Jamie Mayo	63	Sarah Frangenberg	52
Bones Beneath the Sidewalk	64	Jeannette Rankin: Champion of Persistence	66	The Science of Kansas City	67
Bored At Midnight Productions	73	Jeremiah Kauffman	46	Scream in Blue	44
Brian Johnson	21	Jim Cogswell	59	Sebastian Smith	46
Brie Henderson	71	John Dwyer	48	Shannon Savard	60
Br. John	51	Judy Simmons	51	Sheri So	27
C.K. Carey	59	Kansas City Aerial Arts & VidaDance	49	Sheron Smith	27
CAGKC	71	Katheryn Krouse Art	23	THE SHIFT SHOW!	71
Caddy Shakes	50	KC2	60	Sides of History	67
Caitlin Cook: Death Wish	66	The KC Improv Company	58	The "SIN"-sational Mae West	45
Carl D'Amico	18	KC's Magic Showcase	72	Six Degrees of Defecation	71
Carol Branson	17	Kent Rader	64	Skulldog Productions	67
Chapters of Seeking	48	Kevinanne Taylor	28	The Society of American Magicians	72
Charlie Mike Theatre Company	44	Kitchen Plays	54	Spenser Albertsen	16
Chris Stephens: World Musician	61	kNew	62	Stewart Huff	68
Cloud 9 Productions	53	Kristine Norvaishas	45	Subject to Change Theatre	45
Colleen Enna	64	Lamal Mack Studios	57	The Summer House by Christie Kernard	69
Collidescope	50	Lesley Ravenhair	25	Susana Bruhn	17
Confluence Theatre Company	44	Leslie Norman Hubble	21	Susanne Andersen Szimpl	28
Cowboy Mouth by Sam Shepard & Patti Smith	68	Lezlie Revelle Zucker	54	Suzette Woods	62
Crescendo Conservatory	48	Let Me Explain My Blackness	55	Sybil Paris-Noble	23
Craig Mildrexler	23	Letoya Goff	19	Teagan Brown	72
Dan Born	58	Lewis Morrow	57	T-Money Is Cancelled	69
Daniel Baxley	16	Life of an Empath	49	Thorn Productions	66
David Gaines	70	Lightweight	73	THUD Productions	68
Deceit	54	Delta Heart Productions	60	Timothy Mooney Repertory Theatre	53
Details Jewelry	18	Lilly	60	Toni Kirk	21
Devin Edwards	18	Lil' Theatre Comany	73	Tony Sloan	65
Donating Sperm To My Sister's Wife	68	Liz Kerlin	66	Tortoise Shell Productions	67
Dreams Do Come True	64	Local Film Works	57	Tristian Griffin	48
Ellen Creed	18	Look What the Fire Did	57	Turning the Page	49
Emily the Musical	52	Louder Than a Sound by KC2	60	Tyler Marble	23
EmMarie Quirk	65	Lucky Bastard Productions	45	U Really Got A Hold On Me	51
Emmy Rivera	62	Magic Is Not Pretty	59	Vania Soto	27
Enlarged to Show Texture	58	Man Cave	53	VidaDance Company	49
Eric Klammm Photography	21	Mark Walter	28	Voler Aerial Academy	70
Expectation	52	Meg Young	29	War Paint	73
Fairbanks Shakespeare Theatre	50	Melanie Sherman	27	Weirdo: A Perfectly Normal Lesbian Contemporary Ballet...Romance Included	47
The Family Continues	71	Melting Pot Films	57	What a Woman Wants	63
Fantasma vs. the Vampire Women	68	Mercy	71	With Me, and Such as Me, it is Different	69
Faust Theatre	44	Mike and Nancee Micham	73	The Women Of Cell Block 4	47
Final Curtain	64	Musical Geography	61	Yaskween Productions	55
Five and a Half Feet of Fearsome	60	MUTNIK	65	Yeti and Me!	63
Flights of Faery Fancy	70	New Digital Pathways	57	You Are (Not) Okay	45
Flyover Works	68	Nicole Brinkman	17	You Get What You Need	57
For Whom the Comedy Panders	48	An Old Troubadour & His Guitar	59	The Young Life and Troubled Times of Reuben Hall	45
Gifted Soul Productions	47	Para Pendejo No Se Estudia	46		
		Patrick Pribyl	25		



16 OZ CANS
12 AT A TIME

SO WHAT DOES THIS REALLY MEAN, YOU ASK? WELL, IT MEANS SCHLAFLY GIVES YOU 192 OUNCES OF BEER FOR THE PRICE OF 144. YOU COULD ALSO LOOK AT IT AS YOU'RE GETTING 4 EXTRA BEERS COMPARED TO THE OTHER GUYS. EITHER WAY IT SIMPLY MORE BEER FOR YOUR BUCK!

SO, LOOK FOR OUR 12-PACK CONCEPT IN YOUR FAVORITE LIQUOR AND GROCERY STORES. THEY ARE AVAILABLE NOW. CHEERS!



© 2018 The Saint Louis Brewery LLC, Saint Louis, MO

 schlafly.com

 [/schlaflybeer](https://www.facebook.com/schlaflybeer)



 [@schlafly](https://twitter.com/schlafly)

 [@schlaflybeer](https://www.instagram.com/schlaflybeer)